

Simmental

BEGGER'S

Angus

Begger's DIAMOND V RANCH

Wednesday, February 4, 2015 // 12:30 PM

At the Ranch // Wibaux, MT

Selling 152 Simmental, SimAngus & Angus Bulls



Big Sky Genetic Source Bull Sale



WELCOME

This year proved to be one that every one in the cattle business should be happy with. We planned to weigh the bulls in late August when we preconditioned, but Murphy's Law came into play and the scale had problems so we weighed them on October 8th when we weaned them. So some were over 240 days of age. This does not help 205 wt. adjustments to go over that far. I listed both their 205 and actual weights. As you can see they were heavy. They are an excellent set of bulls. We had a great wean off and the bulls settled right in.

We were hard on them and culled for any little problem that we saw. So only the best made the sale. We have taken the stand that you the cow/calf man comes first. No EPD or any other segment of the industry will come before you the man that spends the most time with them, and owns them the longest. You will find cattle with calving ease, easy keeping, fertility and maternal is our main focus. These cattle will be sensible sized with the ability to produce payweight you will find them to be easy fleshing and easy to handle.

We believe that these cattle will work throughout the beef chain, but not at your expense. Please take the time to read through my food for thought on page 28.

As always we stand behind these cattle if you have a problem we want to know and we will take care of you. We want to thank each and everyone for their interest and past purchases. If you are a first time customer welcome and thanks for choosing us. Buy knowing that we are here to service your needs.

Sale day is busy and we want to meet you, take time to get acquainted and meet us. If you have questions come ask us about our opinion on your picks if you would. We will be glad to advise the best we can. Come hungry, as we will have dinner and refreshments available.

After the sale we will serve you a steak sandwich and have some beverages around for your enjoyment. If you can stick around and socialize this is our easiest time to take the time and get to know you better. If you must get going right away grab a sandwich and refreshment for the road.

Thank you so much for choosing us for your cattle needs. We hope that we are able to meet your needs and expectations.

From all of us here at Begger's Diamond V

BEGGER'S DIAMOND V RANCH

February 4, 2015 // 12:30 PM MST // At the Ranch, Wibaux, MT

MOTELS

Beaver Creek Inn, Wibaux, MT 406-796-2666
Buckboard Inn, Beach, ND 701-872-4794

SALE DAY PHONES

406-796-2326 // 406-796-2380 // 406-796-2327
Bill Begger, darbegger@yahoo.com 406-796-2326
482 Custer Trail Rd, Wibaux, MT 59353
John Begger 406-795-9914
Bob Begger 406-796-2380
Harry Begger 406-796-7600

AUCTIONEER

Roger Jacobs 406-373-6124 // 406-373-7385

REPRESENTATIVES AND RINGMEN

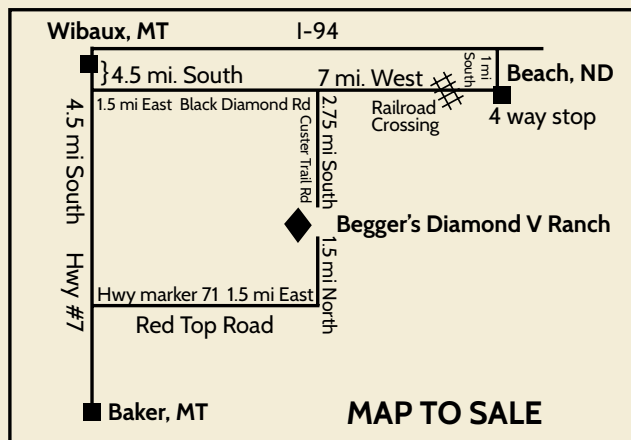
Jeff Thomas, Prairie Star 406-581-8859
Kirby Goettschd, Farm and Ranch Guide 605-380-3939
John Goggins, Western Livestock Reporter 406-373-5000
Mason Lautenschlager, ASA 701-509-3251
Marty Ropp, Allied Genetic Resources 406-581-7835
Shane Whitman, Pelton Livestock Representative 406-366-0788

RANCH LOCATION

The sale will be held at the ranch located south of Wibaux, Montana, go 4 1/2 miles south of the Wibaux County Fair Grounds on Highway #7, then turn left on Black Diamond Road (east) go 1 1/2 miles, then turn right (south) on Custer Trail Road, go 2 3/4 miles, sale location is on the left hand side of the road.

From Beach, North Dakota, take Exit One, turn left, go past both Truck Stops, approximately 1 mile to the first stop sign (please note the 4 way stop), turn right at 4 way stop, go 7 miles west, then turn left on Custer Trail Road and go 2 3/4 miles, sale location is on the left hand side of the road.

From Baker, Montana, take Highway #7 north, approximately 35 miles, turn right on Red Top Road at mile marker 71, watch for big yellow Ranch sign, go 1 1/2 miles east (Custer Trail), turn left, go 1 1/4 miles, sale location is on the right hand side of the road.



CATTLE VIEWING

We welcome your visit anytime that you are in the area. Please call before you come, so that we are here to show you around.

TERMS AND CONDITIONS

As recommended by the American Angus and American Simmental Associations. Cattle will only be released from the sale after they have been settled for. In no instance, will any cattle be allowed to be loaded for shipping without full settlement. EPD's listed in catalog are new Spring 2015 numbers, please note that EPD's may change from time sale catalog is printed, until registration papers are transferred.

ULTRASOUND

Please Note: The spring born bulls will be ultrasounded and data will be available sale day, or as soon as available.

FEEDING ARRANGEMENTS AND DELIVERY

For bulls selling for \$2,500 or more, we will offer free keep of your bull until the first of April. At that time we will semen test and give your bulls a breeding exam and deliver them free of charge up to 500 miles. For bulls that sell for less than \$2,500 we will feed them and have them semen tested for \$150 due on sale day. We will help in delivery arrangements. The bulls will be delivered to your ranch or in some cases when there are multiple owners of cattle on the truck and there is a need to unload and sort cattle, we may ask that you meet us at a central location that is convenient to both parties. For cattle selling over 500 miles away, we may have to hire a trucking firm to help with delivery, if so, we will guarantee delivery cost not to exceed \$300 per bull. In most cases, we will deliver them ourselves, but occasionally we will put the bull on a commercial truck that is reputable and conscientious. For purchases of cattle a long distance away, we ask that you be flexible on delivery dates in case we have the opportunity to send your bull your direction earlier than April 1st. When purchasing a bull from Begger's Diamond V Ranch, we take responsibility in delivering a healthy, breeding bull. We will take responsibility of injury or death loss while the bull is on our ranch. Responsibility of your bull purchase begins when he reaches your ranch or delivery point. We guarantee buyer satisfaction. If you have any problems with your bulls ability to breed and settle cows, let us know so we can make it right. We suggest that you insure your bull against death or injury. We cannot guarantee them against an act of God or sickness that develops while he is in your control. We do guarantee our cattle to be healthy sale day.

ANNOUNCEMENTS

Announcements made sale day and from the auction block during the sale take precedence over printed material associated with this sale. Anyone attending this sale attends at their own risk. Begger's Diamond V Ranch or any of the sale force will not be responsible for any personal injury or loss while attending this sale.

HEALTH AND VACCINATIONS

The Bulls were vaccinated at branding with Pyramid 4, with Prespense and Vision 7 with Somnus, and again at weaning, they were poured with Ivermectin on September 3 and again in December. They were tested free of BVD and to be best of our knowledge are free from all genetic defects.

SALE ORDER

We will sell lots 1 through 20, then fall bulls, then go back to lot 21 following catalog order, selling Angus bulls last.

SIGHT UNSEEN PURCHASES

We guarantee all sight unseen purchases. Call ahead and we will go over the bulls and try and match you up with a bull that meets your needs. You can leave a bid with us or any Sales Rep. or by phone, whichever is convenient for you. We know our cattle and strongly recommend that you call and visit with us on all sight unseen purchases. Sight unseen purchase policy does not apply if you are selecting your own bulls without our consultation or the help of our sales reps.

INTERNET

Our sale will be broadcast over the Internet on DV Auctions. If you cannot attend the sale in person we have set up this method so you can view the sale and make a purchase. Make sure you pre-register with DV Auctions before sale day. We likewise will offer phone service sale day for those who prefer making their purchase that way.

Catalog by

Generation 6
Marketing

Emily Brinkman | 419-967-0141 | www.generation6.co

ABOUT API & TI INDEXES

When I was on the ASA Board Jerry Lippsey came to the board with an idea, the first he called the All Purpose Index (API Index). He presented it to us like this; we need to make things simpler there are so many EPD's that it is confusing.

He went on to say; this index is for the man that works in town, runs 20-30 head of cattle and breeds his yearling Angus heifers to the same bull as his mature cows. So extreme calving ease is important. This bull will also need to serve the packing industry well so high carcass traits are a must. Milk numbers need to be good because we want to keep replacements. This will be the Total Package, easy calving, great carcass, and daughters that milk. As a board we all thought, it sounds great and easy to sell. One size fits all.

Today after over a decade of use there is some differences of opinion on what is best. What I soon came to realize working with a large cowherd is this; I don't breed my mature cows to the same type of bull as my Angus heifers. I expect them to produce 85-95lb calves, enabling them to produce more pay weight and more value at sale time.

There are breeders out there that make their entire breeding decisions off this index, and claim it is the way to go. I am somewhat concerned; it seems these cattle are more fragile with less ability to produce fleshing ability and pay weight than the cattle that are in the 20-50 percentile range. It is no secret that the higher the API the better the carcass EPD's are, but I notice that the pay weight and weaning performance will suffer. I have and will continue to use some of the elite API cattle but I likewise will not dwell solely on this index or any single trait EPD at the expense of our cowherds ability to stay easy fleshing, easy keeping, maternal, and wean heavy.

There is no right or wrong but we feel that if you desire extreme carcass or calving ease the higher the better. If you desire cattle with more fleshing ability, safe calving ease, with more pay weight, ability to gain weight, and stay in condition then back off this number somewhat and you will like the results better.

The TI index is Terminal Index

This index was designed for use on mature cows only. It is for the cattleman that sells all of his calves and buys his replacements. This index is not to be used with the API Index or used if you keep replacements.

This EPD still puts a lot of emphasis on carcass traits and a little more on payweight. I find this EPD to be of value to a cattleman that retains ownership otherwise it has little value to most cattlemen.

RETAINED SEMEN INTEREST IN BULLS

You will notice that we are selling 3/4 interest and full possession in all bulls in this offering. This means we are retaining a 1/4 revenue sharing semen interest in all the bulls. This semen interest is a royalty interest that entitles Begger's Diamond V Ranch to 1/4 of the revenues of any semen sold. It means the bull is in your control and possession unless otherwise stated or for a mutually agreed upon handling of the bull for promotional purposes. You get 100% of the salvage value of the bull. Begger's Diamond V Ranch retained semen interest remains even if the bull, or any interest in the bull, is sold to a third party. It is the buyer's responsibility to ensure that Begger's Diamond V Ranch's interest is upheld if semen is ever sold. The buyer must also inform any third party of Begger's Diamond V Ranch's interest if the bull is ever sold. Any semen you choose to collect as an 'insurance policy' on your bull for your own in herd use, is 100% yours. Begger's Diamond V Ranch will not be responsible for expenses related to semen collection or promotion of any bull purchased. Unless a mutual agreement is reached for these expenses prior to promotion and semen collection. Cost incurred in collecting semen for Begger's Diamond V Ranch within herd use will be the responsibility of Begger's Diamond V Ranch. Any semen collection will be arranged at the convenience of the new owner of the possession interest in the bull. If you the buyer decides that you would like to own 100% of the semen rights, simply add 25% of the bulls purchase price to your settlement. This will entitle you to 100% of the bull's future semen sales. Begger's Diamond V Ranch will still retain the right to collect 200 units of semen for within herd use at our expense.

Can't make the sale? Watch & bid online for FREE at www.dvauction.com !

DVAuction
Broadcasting Real Time Auctions

Buying online is as easy as 1,2,3...

1. Create an account at www.dvauction.com under the "register" tab
2. Apply for bidding approval by clicking on the "details" tab at least 24 hours prior to the auction-a DV representative will notify you once you have been approved
3. Tune in for the sale and make your purchases!

After the sale, contact the sale manager or owner to arrange transportation and payment. **High speed internet** is required for successful bidding-be sure to check the lag-time monitor in the top left corner to ensure real-time broadcasts.

Proxy Bidding-if you can't make time to watch the sale, register a proxy bid and let our system represent your bid while you're away. Look for the "proxy bid" tab on the auction listing, and fill in your maximum bids. We'll handle the rest!

Having troubles?

During the auction, you can type a message to the operator at any time for assistance. Our full-time support team can also always be reached at (402) 474-5557.

Sale Day Conference Call



Our goal is to have you in the seats but if you can't make it on sale day, we're fixin' to get you "on the line!"

Easy as 1-2-3

Call Bill Pelton in advance to...

1. Pre-register for your buyer number
2. Receive the toll free call in number and pin
3. Get last minute instructions for the call



Pelton Livestock
Marketing & Consulting
www.billpelton.com
bill@billpelton.com | 406-671-5100



OFFERING
AMERICAN
LIVE STOCK
INSURANCE SERVICES



1 **13B**

Homo Black • Homo Polled • SimAngus 1/2 Blood Bull
 ASA# 2913013 • Tattoo: 13B • BD: 2/7/14
 Act. BW: 90 lbs. • Act. WW: 880 lbs. • Adj. WW: 748 lbs. • Ratio: 107
 Adj YW: 1335 lbs. • ADG: 3.63 lbs. • SC: 39

S A V FINAL ANSWER 0035 GW LUCKY MAN 644N
CONNEALY CAPITALIST 028 **BDV MS LUCKY MAN U15**
 PRIDES PITAOFCONANGA8821 BDV RENEE S43

Igenity DNA Profile Available

CE	BW	WW	YW	MCE	M	MW	CW	YG	MB	BF	REA	API	TI
13.8	-0.3	68.9	114.4	11.9	23.8	58.3	38.0	-0.09	0.49	-0.015	0.49	147.5	78.6

This bull is the right kind; he offers some of the top genetics available. These Connealy Capitalist Cattle are thick-topped deep ribbed and very wide deep rear quartered. They are born easily and weigh like lead at weaning, going on to gain with the best of them. This bull is undoubtedly a true herd bull prospect. He is seed stock quality and offers an out cross twist to many SimAngus genetics. This guy has a super personality.



2 **99B**

Homo Black • Homo Polled • Purebred Simmental Bull
 ASA# 2913186 • Tattoo: 99B • BD: 3/27/14
 Act. BW: 95 lbs. • Act. WW: 790 lbs. • Adj. WW: 827 lbs. • Ratio: 119
 Adj YW: 1470 lbs. • ADG: 4.02 lbs. • SC: 35.5

KS BLACK DIAMOND W992 LRS WCS MASTER DESIGN 58
TRAXS DOC Z52 **BDV MS MASTER DESIGN W23**
 SRS S21 BDV MISS SARA R45

Igenity DNA Profile Available

CE	BW	WW	YW	MCE	M	MW	CW	YG	MB	BF	REA	API	TI
6.5	3.3	70.9	111.2	8.3	23.5	59.0	41.0	-0.26	0.15	-0.049	0.81	123.1	70.2

Absolutely a herd bull prospect. If you are looking for a deep-sided thick butted herd sire take the time to come look at this out cross Doc son. This bull is out of a dam that consistently weans in the extreme top of our herd. His ratio was 119 at weaning to rank #2 out of 123 contemporaries. He not only looks good he has proved himself to be one of the top performers of this powerful calf crop.



3 **110B**

Homo Black • Homo Polled • Purebred Simmental Bull
 ASA# 2913202 • Tattoo: 110B • BD: 4/1/14
 Act. BW: 90 lbs. • Act. WW: 753 lbs. • Adj. WW: 841 lbs. • Ratio: 121
 Adj YW: 1481 lbs. • ADG: 4.00 lbs. • SC: 38

KS BLACK DIAMOND W992 RFS W109
TRAXS DOC Z52 **BDV MS SUMIT Y46**
 SRS S21 BDV MISS DANA N22

CE	BW	WW	YW	MCE	M	MW	CW	YG	MB	BF	REA	API	TI
6.7	3.9	85.7	124.6	8.1	22.0	64.8	49.1	-0.21	0.17	-0.044	0.78	122.2	78.0

A powerful purebred Doc son that leads the group at 205 days, his ratio at weaning being 121 to rank him #1 out of 123 powerful herd mates. His cow family consistently proves to be some of our finest. This bull will certainly blow you away when you analyze him. He is clean made with a big sweeping rib cage. When you get behind him you will find a big wide butted bull that carries down deep into his hock. Not very many times do you find the Top indexing calves to be so complete. I look at Lots 2 & 3 and sometimes wonder who will own them and which one they will pick. There is no doubt that if I didn't own their sire one would be staying here. Excellent quality, performance, and balance make these bulls stand out as some of the best to sell this spring. Excellent disposition and offering real outcross genetics to the Simmental breed.



4 **43B**

Homo Black • Homo Polled • SimAngus 1/2 Blood Bull
 ASA# 2913071 • Tattoo: 43B • BD: 2/21/14
 Act. BW: 82 lbs. • Act. WW: 826 lbs. • Adj. WW: 793 lbs. • Ratio: 114
 Adj YW: 1418 lbs. • ADG: 3.91 lbs. • SC: 35

S A V FINAL ANSWER 0035 TNT AXIS X307
CONNEALY CAPITALIST 028 **BDV MS AXIS Z21**
 PRIDES PITAOFCONANGA8821 BDV MS KNOCK OUT W37

Igenity DNA Profile Available

CE	BW	WW	YW	MCE	M	MW	CW	YG	MB	BF	REA	API	TI
10.4	-0.1	84.7	131.0	8.2	16.4	58.7	47.3	-0.07	0.42	0.005	0.70	134.2	84.3

Another Capitalist son that was a standout this summer. His two year old Dam by AXIS certainly proves that two year old heifers with great genetics and cow families can raise a calf that is breed leading. This bull is a real out cross that offers the best. Low birth weight, high weaning, top performance on test, and the style and look to be in the elite class. Never before have I been so excited about a group of bulls from the beginning to end. These bulls in the front pen have never been this powerful or has there been so many herd sire prospects for seed stock and top commercial cattlemen alike. This bull deserves a serious look. He has great disposition to boot. One of this bulls best assets is his cow family is stacked with out best. He also is a top growth curve bender that will be moderately framed as a mature herd sire. His actual weaning weight on October 8th was 826lbs; he indexed 114 to rank #3 out of 123 contemporaries.





5



6



8



5

18B

Homo Black • Homo Polled • SimAngus 3/4 Blood Bull
ASA# 2913026 • Tattoo: 18B • BD: 2/11/14
Act. BW: 88 lbs. • Act. WW: 907 lbs. • Adj. WW: 777 lbs. • Ratio: 112
Adj YW: 1363 lbs. • ADG: 3.66 lbs. • SC: 36

WHEATLAND BULL 680S
KS BLACK DIAMOND W992
KS KAYLA J497

ES BLACK LEGEND PK26
BDV MS LEGEND U17
BDV IVY S51

Igenity DNA Profile Available

CE	BW	WW	YW	MCE	M	MW	CW	YG	MB	BF	REA	API	TI
6.4	2.3	65.9	101.3	5.2	23.5	56.5	33.6	-0.36	-0.01	-0.061	0.93	92.2	61.8

If you are looking for a moderate framed bull with exceptional performance and thickness, look no further. I don't believe you will find a bull anywhere with more thickness and body mass than this guy. Seed stock and commercial men alike need more cattle with this bull's body style. His is out of a real low maintenance Dam that always brings in one of the best. This bull weighed 907lbs on October 8th to index 112, and leaving him to ratio in the top 10 at weaning. If you want to add exceptional fleshing ability along with sensible mature size that is easy keeping and very maternal look this bull up.

6

60B

Homo Black • Polled • SimAngus 1/2 Blood Bull
ASA# 2913108 • Tattoo: 60B • BD: 3/6/14
Act. BW: 95 lbs. • Act. WW: 809 lbs. • Adj. WW: 755 lbs. • Ratio: 108
Adj YW: 1376 lbs. • ADG: 3.88 lbs. • SC: 37

APEX WINDY 078
APEX HIGH POINT 162
APEXETTE ROSE 8021

PPSR EXTRA CREDIT 20P
BDV MISS ABBY S61
BDV MISS JENNIFER N75

CE	BW	WW	YW	MCE	M	MW	CW	YG	MB	BF	REA	API	TI
3.0	2.0	75.0	111.8	3.7	30.3	67.8	39.0	-0.08	0.15	-0.015	0.49	86.7	68.9

If you like cattle that are long deep bodied and powerful, here's a bull to seek out. This guys dam is undoubtedly the widest, deepest cow on the Ranch. Everyone that visits comments on her stoutness. Here is a bull that comes from outcross genetics that work. His Sire was the top selling bull out of APEX Angus. He is sired by APEX WINDY 078. His Dam is a daughter of PPSR Extra Credit. Use this bull to ad total performance. Use him on mature cows to ad pay weight and to sire exceptional replacement heifers. Actual weaning weight of 809lbs on October 8th.

7

75B

Homo Black • Homo Polled • SimAngus 1/2 Blood Bull
ASA# 2913140 • Tattoo: 75B • BD: 3/16/14
Act. BW: 88 lbs. • Act. WW: 796 lbs. • Adj. WW: 770 lbs. • Ratio: 111
Adj YW: 1368 lbs. • ADG: 3.74 lbs. • SC: 37

WCS MR TRADITION 732T
BDV NEW TRADITION 131X
BDV GINGER 6S17

S A V 5175 BANDO 502
B D V T720 OF BOXCAR
N F C BLACKBIRD 1647

CE	BW	WW	YW	MCE	M	MW	CW	YG	MB	BF	REA	API	TI
11.1	0.0	59.1	93.9	9.0	28.9	58.5	26.1	-0.11	0.40	-0.026	0.33	127.9	69.9

This is a power packed New Tradition calf out of a powerful Angus Dam that ALWAYS puts a top performance bull in one of the lead-off pens. Here is a bull that offers excellent performance and outcross genetics. New Tradition does a great job producing SimAngus 1/2 Bloods. Just take a look, this bull weighed in at 796lbs on October 8th He indexed 111 and ranked #12 out of 123 contemporaries. If you are looking for one of the elite genetic packages to sell this year, you might be looking at him.

8

9B

Homo Black • Homo Polled • SimAngus 1/2 Blood Bull
ASA# 2913003 • Tattoo: 9B • BD: 2/3/14
Act. BW: 80 lbs. • Act. WW: 865 lbs. • Adj. WW: 750 lbs. • Ratio: 108
Adj YW: 1348 lbs. • ADG: 3.74 lbs. • SC: 36

S A V FINAL ANSWER 0035
TNT TUITION U238
TNT MISS S68

BDV CLICKER 27T
BDV MS CLICKER Y41
B D V K019 OF HI TECH

CE	BW	WW	YW	MCE	M	MW	CW	YG	MB	BF	REA	API	TI
10.2	0.4	65.6	104.4	8.0	17.2	50.0	32.8	-0.13	0.38	-0.019	0.53	124.1	71.6

Cow efficiency at its finest here. This bull is proof that cows don't have to be all that big to raise top weaning weights. This bulls dam only weighs about 1150lbs as a three year old and weaned 865lbs actual on October 8th. This bull is a real eye pleaser. He is long, clean made and well put together. These Tuition calves are easy to appreciate. They look good and perform well. There are a large number of these 1/2 brothers and not a bad one in the bunch. This bull is a number 10 on disposition, and is so easy to be around.

Lot
9

30B

Black • Homo Polled • Purebred Simmental Bull
ASA# 2913052 • Tattoo: 30B • BD: 2/18/14
Act. BW: 92 lbs. • Act. WW: 813 lbs. • Adj. WW: 733 lbs. • Ratio: 105
Adj YW: 1349 lbs. • ADG: 3.85 lbs. • SC: 38

TNT TUITION U238
TNT AXIS X307
TNT MISS U27

X

RF NASA
BDV RENEE S43
947M

Igenity DNA Profile Available

CE	BW	WW	YW	MCE	M	MW	CW	YG	MB	BF	REA	API	TI
4.9	2.3	67.0	100.9	5.8	18.7	52.2	33.3	-0.28	0.12	-0.044	0.81	96.4	64.2

Here is a thick topped, thick-butted bull with loads of rib. His dam is a consistently good producer; she raised a full brother to this bull that was the lead off bull in our sale a few years ago. The AXIS cattle certainly draw attention when you see them. They are always some of the heaviest and thickest calves in the pen. There is no guesswork here; he comes from proven hard working genetics.



9

Lot
10

98B

Homo Black • Homo Polled • SimAngus 1/2 Blood Bull
ASA# 2913185 • Tattoo: 98B • BD: 3/26/14
Act. BW: 80 lbs. • Act. WW: 760 lbs. • Adj. WW: 766 lbs. • Ratio: 110
Adj YW: 1352 lbs. • ADG: 3.66 lbs. • SC: 35

MYTTY IN FOCUS
BDV TORQUE 912W
BDV R523 OF HARTTRAVELER

X

LRS PREFERRED STOCK 370C
BDV MS PREF STOCK U20
BDV MISS SARA R45

CE	BW	WW	YW	MCE	M	MW	CW	YG	MB	BF	REA	API	TI
12.6	-0.6	69.8	105.0	8.9	16.9	51.8	31.2	-0.11	0.34	-0.017	0.47	133.1	74.2

This bull is out of one of Mytty In Focuses best sons, BDV Torque. His is very stout and well made. Fancy, thick and well put together describes him best. His dam is a top producing preferred stock cow, which has proven to be an excellent top producer. If you like cattle that have big stout rib cages and are extra fancy don't miss this bull.



10

Lot
11

81B

Homo Black • Polled • SimAngus 1/2 Blood Bull
ASA# 2913153 • Tattoo: 81B • BD: 3/18/14
Act. BW: 87 lbs. • Act. WW: 762 lbs. • Adj. WW: 782 lbs. • Ratio: 112
Adj YW: 1376 lbs. • ADG: 3.71 lbs. • SC: 5.5

MYTTY IN FOCUS
BDV TORQUE 912W
BDV R523 OF HARTTRAVELER

X

BDV CLICKER 27T
BDV MS CLICKER Y48
MISS PRICKLY PEAR 331N

CE	BW	WW	YW	MCE	M	MW	CW	YG	MB	BF	REA	API	TI
13.3	0.7	71.4	109.1	11.3	13.9	49.6	35.8	-0.10	0.26	-0.030	0.40	132.1	71.5

What a complete bull so well put together in a moderate easy fleshing fancy package. He is a big thick topped, big-butted bull with a clean fancy look. His young three-year-old dam certainly did her work with this powerful Torque son. He indexed 112 at weaning to rank 6 out of 123.



11

Lot
12

25B

Homo Black • Homo Polled • SimAngus 3/4 Blood Bull
ASA# 2913043 • Tattoo: 25B • BD: 2/15/14
Act. BW: 80 lbs. • Act. WW: 841 lbs. • Adj. WW: 790 lbs. • Ratio: 113
Adj YW: 1425 lbs. • ADG: 3.96 lbs. • SC: 40

HOOKS SHEAR FORCE 38K
RCR STETSON T17
RCR SADIE R29

X

RFS W109
BDV MS SUMMIT Z89
BDV U814 OF IMAGE MAKER

CE	BW	WW	YW	MCE	M	MW	CW	YG	MB	BF	REA	API	TI
13.8	0.1	85.2	126.6	11.3	23.2	65.8	44.7	-0.20	0.40	-0.037	0.77	148.9	89.4

Just out of a two year old dam, he weighed off at 841lbs on October 8th to index 114, and to rank 4 out of 123 contemporaries, only weighing 80lbs at birth. This is getting it done; use this bull to add some frame and length. He should really work on a set of Angus or baldy cows. He comes from a cow line that consistently weans at the top. Proven hard working genetics here.



RCR STETSON T17 - Sire of Lot 12



Lot
13

12B

Black • Homo Polled • Purebred Simmental Bull
ASA# 2913012 • Tattoo: 12B • BD: 2/7/14
Act. BW: 98 lbs. • Act. WW: 907 lbs. • Adj. WW: 787 lbs. • Ratio: 113
Adj YW: 1516 lbs. • ADG: 4.56 lbs. • SC: 35.5

TNT TUITION U238
TNT AXIS X307
TNT MISS U27



PPSR EXTRA CREDIT 20P
BDV AMY 6S21
NLC J46 JAVA

CE	BW	WW	YW	MCE	M	MW	CW	YG	MB	BF	REA	API	TI
3.7	4.1	85.3	125.2	5.9	15.9	58.6	49.9	-0.25	0.21	-0.030	1.05	100.6	74.6

This bull is for the cattleman that demands pounds at weaning. He was our heaviest calf at weaning, weighing in at 907lbs on October 8th. His dam is a heavy milking Extra Credit daughter that always puts her all in her calves. Use this bull on mature cows and watch your pay weight soar. His daughters should be top producers with excellent udder quality.



Lot
14

11B

Homo Black • Homo Polled • SimAngus 1/2 Blood Bull
ASA# 2913008 • Tattoo: 11B • BD: 2/6/14
Act. BW: 93 lbs. • Act. WW: 886 lbs. • Adj. WW: 737 lbs. • Ratio: 106
Adj YW: 1335 lbs. • ADG: 3.74 lbs. • SC: 37

S A V FINAL ANSWER 0035
TNT TUITION U238
TNT MISS S68



B D V SOLUTION 603S
BDV MS SOLUTION U6
CVF MISS HARMS TIME

CE	BW	WW	YW	MCE	M	MW	CW	YG	MB	BF	REA	API	TI
6.8	2.2	70.8	113.5	6.5	20.8	56.2	40.8	-0.11	0.47	-0.013	0.63	116.1	74.7

Here is a bull that was one of my top picks all summer long. His is thick, long, and wide made. His dam is a true power cow. Very stout made and always bringing one of the heaviest to the weaning pen. This bull weighed 896lbs on October 8th, his ratio was 106 and today is still one that pleases the eye. Cattle like him are easy to sell and they weigh up heavy, so they are worth more come sale time. Like the saying goes, "if they weigh more, they pay more".

TNT TUITION U283
Sire of Lot 14 & many more sons & grandsons



Lot
15

57B

Homo Black • Homo Polled • SimAngus 1/2 Blood Bull
ASA# 2913103 • Tattoo: 57B • BD: 3/4/14
Act. BW: 98 lbs. • Act. WW: 820 lbs. • Adj. WW: 750 lbs. • Ratio: 108
Adj YW: 1380 lbs. • ADG: 3.94 lbs. • SC: 36.5

MR NLC UPGRADE U8676
LRS FLEX 802Z
LRS MS BENET TOTAL 802U



B D V SOLUTION 603S
BDV MS SOLUTION U33
CVF MISS PRIME SPIDER

CE	BW	WW	YW	MCE	M	MW	CW	YG	MB	BF	REA	API	TI
7.7	2.9	77.3	125.1	8.8	21.6	60.2	48.8	-0.12	0.34	-0.027	0.63	115.5	75.0

His dam is a half sister to Lot 14 and boy they produce a like, big strong calves that excel. The flex bull certainly sires performance and this calf might be his top son. If you demand long stout calves that look good, take a look here. Cattle like him pay the bills. Actual weaning weight was 820lbs on October 8th; he indexed 108 out of 123 contemporaries.



Lot
16

19B

Homo Black • Polled • SimAngus 1/2 Blood Bull
ASA# 2913033 • Tattoo: 19B • BD: 2/13/14
Act. BW: 92 lbs. • Act. WW: 871 lbs. • Adj. WW: 755 lbs. • Ratio: 108
Adj YW: 1349 lbs. • ADG: 3.71 lbs. • SC: 36.5

NICHOLS EXTRA K205
VERMILION X FACTOR
VERMILION LADY 2888



NOBLES NO JOKE M203
BDV ALISSA S60
GSR MS BACKFIRE 639N

CE	BW	WW	YW	MCE	M	MW	CW	YG	MB	BF	REA	API	TI
2.8	1.4	73.2	111.7	10.4	19.3	55.9	38.3	-0.32	0.15	-0.061	0.88	97.3	68.9

This bull is a real looker. He is very clean fronted with a big top and powerful rear quarter that carried down well. His is out of a big powerful Dam with a perfect udder. His full brother sold to Murry Murnion of Jordan. He was also a lead off bull with a lot of friends two years ago. If you like cattle with style and performance here is a very quite disposition bull to look at. This will be his Dams last, as lighting claimed her in August leaving this calf to fend for himself. He weighed in at 871lbs on October 8th.

Lot
17

67B

Homo Black • Homo Polled • SimAngus 1/2 Blood Bull
ASA# 2913122 • Tattoo: 67B • BD: 3/11/14
Act. BW: 105 lbs. • Act. WW: 806 lbs. • Adj. WW: 764 lbs. • Ratio: 110
Adj YW: 1506 lbs. • ADG: 4.64 lbs. • SC: 38

MR NLC UPGRADE U8676
LRS FLEX 802Z
LRS MS BENET TOTAL 802U



F V 20K KING 308M
LRS MS KING 961W
LRS MS CANDMAY 629S

CE	BW	WW	YW	MCE	M	MW	CW	YG	MB	BF	REA	API	TI
10.8	2.9	73.1	118.8	9.1	28.0	64.5	45.1	-0.07	0.42	-0.021	0.50	127.0	75.5

Certainly one of the top performing bulls at the sale, absolutely a stout high-octane bull that will put pounds on the scale at weaning. His dam raised our highest ever weaning calf last year and this year she weaned at 806lbs on October 8th. This guys ratio was 110 at 205 days, I would recommend using him for mature cows and except him to sire calves that crush the scales on payday.



17

Lot
18

38B

Homo Black • Homo Polled • SimAngus 1/2 Blood Bull
ASA# 2913062 • Tattoo: 38B • BD: 2/20/14
Act. BW: 110 lbs. • Act. WW: 869 lbs. • Adj. WW: 770 lbs. • Ratio: 111
Adj YW: lbs. • ADG: lbs. • SC:

WHEATLAND BULL 680S
KS BLACK DIAMOND W992
KS KAYLA J497



S A V FOUR SEASONS 5231
BDV U811 OF FOUR SEASONS
BLACK BUTTE ROYALTY 912

CE	BW	WW	YW	MCE	M	MW	CW	YG	MB	BF	REA	API	TI
4.6	4.5	68.6	110.2	3.3	26.6	60.9	42.5	-0.15	0.08	-0.009	0.81	79.9	61.2

This bull is a power bull. He is the heaviest birth weight bull in the sale, but he was one of the extra long smooth made calves that had so much get up and go as a calf. His birth weight never even showed other than the extra length he had. If you like cattle that wean heavy, take this bull home. Use him on mature cows and I doubt you will ever have a problem. There is so much good in this bull. He is super long and easy on the eye, your calf buyer will love his kind.



18

Lot
19

20B

Homo Black • Polled • SimAngus 3/4 Blood Bull
ASA# 2913034 • Tattoo: 20B • BD: 2/13/14
Act. BW: 102 lbs. • Act. WW: 875 lbs. • Adj. WW: 747 lbs. • Ratio: 107
Adj YW: 1269 lbs. • ADG: 3.26 lbs. • SC: 38

LRS WCS MASTER DESIGN 58
BDV MASTERPIECE 36X
BDV MISS CLASSIC R57



S A V FOUR SEASONS 5231
BDV MS 4 SEASONS 7T59
CVF MISS SPIDER

CE	BW	WW	YW	MCE	M	MW	CW	YG	MB	BF	REA	API	TI
5.4	4.4	74.3	111.1	6.7	18.9	56.1	42.4	-0.11	0.15	-0.035	0.47	97.1	66.0

This is a powerful high performance bull that weaned off his mom at 875lbs actual. There is no doubt he will sire extra pay weight. Use him on mature cows to capitalize on high weaning performance cattle. He indexed 107 at 205 days.

Lot
20

86B

Homo Black • Homo Polled • SimAngus 1/2 Blood Bull
ASA# 2913162 • Tattoo: 86B • BD: 3/20/14
Act. BW: 102 lbs. • Act. WW: 781 lbs. • Adj. WW: 777 lbs. • Ratio: 112
Adj YW: 1420 lbs. • ADG: 4.02 lbs. • SC: 36

MR NLC UPGRADE U8676
LRS FLEX 802Z
LRS MS BENET TOTAL 802U



RFS SCANNER T5
BDV MS SCANNER X64
BDV U822 OF MIDLAND 554

CE	BW	WW	YW	MCE	M	MW	CW	YG	MB	BF	REA	API	TI
7.8	3.2	74.3	118.9	7.6	20.2	57.3	45.6	-0.14	0.42	-0.021	0.72	116.4	74.5

I really like this bull. He is well made with exceptional performance. He is one of the younger bulls but still made the big high performance pen. Look at his depth and his eye appealing body type. Use him to ad performance and to sire those extra fancy calves at weaning.



21

Lot
21

71B

Homo Black • Homo Polled • SimAngus 1/2 Blood Bull
ASA# 2913129 • Tattoo: 71B • BD: 3/12/14
Act. BW: 108 lbs. • Act. WW: 751 lbs. • Adj. WW: 722 lbs. • Ratio: 104
Adj YW: 1290 lbs. • ADG: 3.55 lbs. • SC: 37

MR NLC UPGRADE U8676
LRS FLEX 802Z
LRS MS BENET TOTAL 802U



S A V FINAL ANSWER 0035
BDV MS FINAL ANSWER X4
BDV MS FULL FORCE U87

CE	BW	WW	YW	MCE	M	MW	CW	YG	MB	BF	REA	API	TI
12.3	0.5	70.0	112.4	10.7	26.1	61.1	37.7	-0.18	0.46	-0.015	0.77	139.7	77.9

A Flex out of a Final Answer, what a combination this guy is packed full of performance and pay weight with an actual weaning weight of 751lbs. His dam is a moderate sized cow that puts her all into her calves. Use this bull to ad style and pay weight.



Lat
22

2B

Homo Black • Homo Polled • SimAngus 1/2 Blood Bull
ASA# 2912990 • Tattoo: 2B • BD: 1/29/14
Act. BW: 82 lbs. • Act. WW: 856 lbs. • Adj. WW: 706 lbs. • Ratio: 101
Adj YW: 1340 lbs. • ADG: 3.96 lbs. • SC: 35.5

S A V FINAL ANSWER 0035
TNT TUITION U238
TNT MISS S68



BDV FESTUS 149S
BDV MS FESTUS W45
BDV GLENDA R65

CE	BW	WW	YW	MCE	M	MW	CW	YG	MB	BF	REA	API	TI
8.2	0.8	67.9	104.1	4.0	19.9	53.8	33.1	-0.14	0.43	-0.016	0.60	116.0	73.5

This is a big time herd bull with style and top notch actual weaning performance he came off his dam October 8th at a whopping 856lbs. His dam is a picture perfect 149S daughter that raises a top calf that is born early making her one of the high fertility cows. When calves are born early they weigh heavy at weaning and actual weight is what you get paid on.



Lat
23

58B

Homo Black • Homo Polled • SimAngus 3/4 Blood Bull
ASA# 2913104 • Tattoo: 58B • BD: 3/4/14
Act. BW: 89 lbs. • Act. WW: 820 lbs. • Adj. WW: 777 lbs. • Ratio: 112
Adj YW: 1385 lbs. • ADG: 3.80 lbs. • SC: 35.5

S A V FINAL ANSWER 0035
TNT TUITION U238
TNT MISS S68



KAPPES VORTEC S507
BDV MS VORTEC W71
BDV LAURIE S44

CE	BW	WW	YW	MCE	M	MW	CW	YG	MB	BF	REA	API	TI
7.5	1.5	71.6	109.1	6.2	19.4	55.2	36.9	-0.22	0.29	-0.043	0.70	114.9	72.7

What a classy eye catcher. This bull is heavy muscled, high performing and stylish. This Tuition son excelled on his dam, he weaned at 820lbs actual to ratio 112 and to rank 9th out of 123 contemporaries. If you want a bull that should sire top performance with light birth weights and daughters that are moderate, good uddered cows that work here you go. Another plus is he is a disposition king.

Lat
24

89B

Homo Black • Homo Polled • SimAngus 1/2 Blood Bull
ASA# 2913168 • Tattoo: 89B • BD: 3/23/14
Act. BW: 85 lbs. • Act. WW: 768 lbs. • Adj. WW: 766 lbs. • Ratio: 110
Adj YW: 1369 lbs. • ADG: 3.77 lbs. • SC: 39

MJ MARATHON 6W
TRAXS SOLO Y39
MISS TRAX U839



MYTTY IN FOCUS
MBP LADY 152S
GREENOUGH LADY 453P

CE	BW	WW	YW	MCE	M	MW	CW	YG	MB	BF	REA	API	TI
12.3	-0.2	64.3	104.4	8.7	30.1	62.2	32.1	-0.17	0.43	-0.042	0.48	134.9	75.0

Here is a big powerful Solo son out of the Mytty In focus daughter that raised one of our top sellers last year going to Lassie Simmentals. This one should catch a lot of attention also. It takes a good cow to produce good bulls and this one has got one. His lineage is a slam-dunk. He ratioed 110 at weaning

Lat
25

100B

Homo Black • Homo Polled • SimAngus 1/2 Blood Bull
ASA# 2913187 • Tattoo: 100B • BD: 3/27/14
Act. BW: 95 lbs. • Act. WW: 725 lbs. • Adj. WW: 733 lbs. • Ratio: 105
Adj YW: 1445 lbs. • ADG: 4.45 lbs. • SC: 35.5

KS BLACK DIAMOND W992
TRAXS DOC Z52
SRS S21



S A V 5175 BANDO 502
B D V T709 OF BOXCAR
ANCHOR FAME 105

CE	BW	WW	YW	MCE	M	MW	CW	YG	MB	BF	REA	API	TI
8.8	2.0	64.2	107.9	7.6	24.6	56.7	37.7	-0.16	0.25	-0.028	0.63	109.4	66.7

This Doc son is strong made, big topped, big butted and is well put together. Ratioing 105 at weaning and showing why the Doc bull works so well. These Doc sons are peas in a pod when it comes to carrying extra eye appeal and muscle all wrapped up in a high-octane package.

Lat
26

1B

Homo Black • Homo Polled • Purebred Simmental Bull
ASA# 2912988 • Tattoo: 1B • BD: 1/21/14
Act. BW: 77 lbs. • Act. WW: 858 lbs. • Adj. WW: 754 lbs. • Ratio: 108
Adj YW: 1335 lbs. • ADG: 3.63 lbs. • SC: 36.5

ELLINGSON LEGACY M229
ELLINGSON DOMINATOR W905
ELLINGSON HUMMER T713



BLACK IRISH KANSAS
MISS PRICKLY PEAR 232Z
MISS PRICKLY PEAR 011X

CE	BW	WW	YW	MCE	M	MW	CW	YG	MB	BF	REA	API	TI
16.2	-0.5	77.1	114.7	15.3	21.5	60.0	36.9	-0.28	0.18	-0.045	0.86	136.6	80.4

This Dominator son is a total outcross to our program. And much of the Simmental breed. His two-year old dam really put it together with this calf. His actual weaning weight if 858lbs made his dam wean at about 70 percent of her body weight. He was a sight to see nursing his mama. He ratioed 108 at weaning, now that is getting it done.

Lat
27

47B

Homo Black • Polled • Purebred Simmental Bull
ASA# 2913078 • Tattoo: 47B • BD: 2/22/14
Act. BW: 80 lbs. • Act. WW: 770 lbs. • Adj. WW: 756 lbs. • Ratio: 109
Adj YW: 1345 lbs. • ADG: 3.68 lbs. • SC: 35.5

HOOKS SHEAR FORCE 38K
RCR STETSON T17
RCR SADIE R29



BDV FESTUS 149S
BDV MS FESTUS Z19
BDV MS CLICKER W90

CE	BW	WW	YW	MCE	M	MW	CW	YG	MB	BF	REA	API	TI
13.5	0.4	70.6	103.8	12.3	22.8	58.1	31.9	-0.24	0.33	-0.042	0.69	145.0	75.6

Out of a two-year-old Festus daughter and Stetson the high API calving specialist, this calf certainly turned the crank on his dam weighing in at 770lbs on October 8th. He has a lot to offer, extreme calving ease with excellent performance through weaning. We are proud of our two year olds that wean calves that take no back seat to the cows.

28 **29B**

Homo Black • Homo Polled • SimAngus 1/2 Blood Bull
 ASA# 2913051 • Tattoo: 29B • BD: 2/18/14
 Act. BW: 90 lbs. • Act. WW: 817 lbs. • Adj. WW: 775 lbs. • Ratio: 111
 Adj YW: 1378 lbs. • ADG: 3.77 lbs. • SC: 36

DIKEMANS SURE BET RFS W109
TJ SHARPER IMAGE 809U **BDV MS SUMMIT Z65**
 T J MISS BANDO S27 BDV R515 OF VRD

CE	BW	WW	YW	MCE	M	MW	CW	YG	MB	BF	REA	API	TI
5.7	3.4	102.1	153.2	7.9	22.3	73.4	65.2	0.09	0.35	0.004	0.43	115.5	87.6

This Sharper Image son is a looker. He is clean made, stout, and wide based. There is some true cow power wrapped up in this bull. His two-year-old dam weaned him off at a whopping 817lbs on October 8th. Now I don't know about you but I feel this is more than exceptional. Use him to sire feeder calves that top markets and make bankers happy. His daughters will be on target.

29 **82B**

Homo Black • Polled • SimAngus 3/4 Blood Bull
 ASA# 2913154 • Tattoo: 82B • BD: 3/19/14
 Act. BW: 90 lbs. • Act. WW: 758 lbs. • Adj. WW: 764 lbs. • Ratio: 110
 Adj YW: 1367 lbs. • ADG: 3.77 lbs. • SC: 39.5

MR NLC UPGRADE U8676 BULLET 37K
LRS FLEX 802Z **BDV MISS CARMEN N65**
 LRS MS BENET TOTAL 802U KSR BLACK MCFRID 555D

CE	BW	WW	YW	MCE	M	MW	CW	YG	MB	BF	REA	API	TI
7.2	2.6	71.7	113.6	7.8	26.6	62.4	41.5	-0.15	0.29	-0.030	0.61	114.0	72.1

This bull is out of one of our biggest bodied cows. She always weans in the upper 1/4 of the calf crop. Although she is eleven years old that didn't stop her from doing it again. A 205 weight 764 to ratio 111 and to rank 19th out of 123 makes him a top performance bull. He will add some pay weight to his calves

30 **55B**

Homo Black • Polled • SimAngus 3/4 Blood Bull
 ASA# 2913101 • Tattoo: 55B • BD: 3/4/14
 Act. BW: 97 lbs. • Act. WW: 762 lbs. • Adj. WW: 716 lbs. • Ratio: 103
 Adj YW: 1292 lbs. • ADG: 3.60 lbs. • SC: 36.5

MR NLC UPGRADE U8676 RF NASA
LRS FLEX 802Z **BDV SHANNA S55**
 LRS MS BENET TOTAL 802U GSR MS EFFORT 947N

CE	BW	WW	YW	MCE	M	MW	CW	YG	MB	BF	REA	API	TI
8.0	2.2	68.4	109.3	7.8	24.3	58.5	38.4	-0.16	0.26	-0.040	0.55	114.0	69.6

This bull is another Flex son out of a very consistent cow. This bull will sire excellent calves that work in all phases of the business. He weaned at 762lbs on October 8th to ratio 103. His dam always brings in a stout calf. His daughters will make great cows. Buy with confidence.

31 **27B**

Homo Black • Polled • SimAngus 1/2 Blood Bull
 ASA# 2913049 • Tattoo: 27B • BD: 2/17/14
 Act. BW: 89 lbs. • Act. WW: 783 lbs. • Adj. WW: 674 lbs. • Ratio: 97
 Adj YW: 1260 lbs. • ADG: 3.66 lbs. • SC: 39

MR NLC UPGRADE U8676 S A V FOUR SEASONS 5231
LRS FLEX 802Z **BDV JENNY T56**
 LRS MS BENET TOTAL 802U BDV MISS PATTY P3

CE	BW	WW	YW	MCE	M	MW	CW	YG	MB	BF	REA	API	TI
11.5	1.4	67.1	104.8	7.5	22.2	55.7	34.5	-0.11	0.28	0.009	0.70	120.2	69.3

Boy this Flex son seems to always catch your attention. He is long bodied, clean made, and has that look we all appreciate. He weaned off his dam with an actual weight of 783lbs on October 8th. Now just imagine taking that paycheck to the bank on a 100 steers. It would make you banker happy and possibly give you wife a little spending money.

32 **34B**

Homo Black • Homo Polled • Purebred Simmental Bull
 ASA# 2913057 • Tattoo: 34B • BD: 2/18/14
 Act. BW: 95 lbs. • Act. WW: 774 lbs. • Adj. WW: 709 lbs. • Ratio: 102
 Adj YW: 1295 lbs. • ADG: 3.66 lbs. • SC: 36.5

WHEATLAND BULL 680S TNT AFTERSHOCK G404
KS BLACK DIAMOND W992 **BDV MONICA M51**
 KS KAYLA J497 BDV KARA H35

CE	BW	WW	YW	MCE	M	MW	CW	YG	MB	BF	REA	API	TI
5.1	4.4	61.0	93.8	6.3	30.5	61.0	32.4	-0.32	0.01	-0.050	0.89	95.8	59.8

This Black Diamond son is the last calf M51 will produce and he is a good one. She was 12 years old a powerfully good producer. But all good things must come to an end, as age finally caught up with her. It seems that the good cows get old way to quickly. These Black Diamond calves are high performance cow bulls that get it done. His daughters are exceptional; so don't miss this opportunity to add performance, daughters that excel and longevity all blended together.

33 **77B**

Homo Black • Polled • SimAngus 1/2 Blood Bull
 ASA# 2913142 • Tattoo: 77B • BD: 3/16/14
 Act. BW: 80 lbs. • Act. WW: 730 lbs. • Adj. WW: 765 lbs. • Ratio: 110
 Adj YW: 1269 lbs. • ADG: 3.15 lbs. • SC: 35

GW PREMIUM BEEF 021TS VERMILION X FACTOR
GW PREM BEEF 612Z **BDV MS X FACTOR Z51**
 GW MISS GPRD 259X GSR MS EFFORT 947N

CE	BW	WW	YW	MCE	M	MW	CW	YG	MB	BF	REA	API	TI
10.7	0.6	78.7	127.1	9.8	20.0	59.3	46.5	-0.20	0.44	-0.042	0.77	135.4	81.8

As we begin this powerful pen of thick meaty bulls with excellent performance and style, I thought it was fitting to start with this well balanced son of Premium Beef 612Z our high API heifer bull. This guy certainly has jumped through the hoops as a well made, calving ease sire out of a Top X-Factor two-year-old dam. Only 80lbs at birth and 765lbs a 205 days, a real nice combination.

34 **93B**

Homo Black • Homo Polled • SimAngus 1/2 Blood Bull
 ASA# 2913175 • Tattoo: 93B • BD: 3/24/14
 Act. BW: 90 lbs. • Act. WW: 766 lbs. • Adj. WW: 777 lbs. • Ratio: 112
 Adj YW: 1276 lbs. • ADG: 3.12 lbs. • SC: 36.5

MYTTY IN FOCUS BDV TNT BLACK HUSTLE 41K
BDV TORQUE 912W **CVF MISS SPIDER**
 BDV R523 OF HARTTRAVELER BDV BLACK SPIDER C9

CE	BW	WW	YW	MCE	M	MW	CW	YG	MB	BF	REA	API	TI
11.7	0.8	64.6	92.5	8.8	21.6	53.9	25.9	-0.07	0.24	-0.030	0.19	121.0	66.7

This bull is one of our younger bulls in this sale and yet he is so right with super performance. Look 777lbs at 205 days of age and to ratio 112 and then rank #8 out of 123, and all of this out of an eleven-year-old dam. His sire Torque always sets the standard when it comes to full bodied easy keeping calves with style.

35 **42B**

Homo Black • Polled • SimAngus 1/2 Blood Bull
 ASA# 2913069 • Tattoo: 42B • BD: 2/25/14
 Act. BW: 88 lbs. • Act. WW: 764 lbs. • Adj. WW: 693 lbs. • Ratio: 99
 Adj YW: 1274 lbs. • ADG: 3.80 lbs. • SC: 36.5

S A V FINAL ANSWER 0035 BDV PAR 4S
TNT TUITION U238 **BDV MS PAR W77**
 TNT MISS S68 BDV MS FOCUS R29

CE	BW	WW	YW	MCE	M	MW	CW	YG	MB	BF	REA	API	TI
10.4	-0.1	61.6	98.1	6.6	20.3	51.1	28.4	-0.09	0.48	-0.013	0.40	128.2	72.6

Now here is a long spined bull with style. He weaned at 734lbs on October 8th, I certainly appreciate these Tuition calves. They have the style that catches calf buyer's eyes. This bull will really work on a set of shorter smaller framed cows that need a little more look to them.

Lat
36

3B

Homo Black • Homo Polled • SimAngus 1/2 Blood Bull
ASA# 2912991 • Tattoo: 3B • BD: 1/29/14
Act. BW: 78 lbs. • Act. WW: 762 lbs. • Adj. WW: 678 lbs. • Ratio: 97
Adj YW: 1291 lbs. • ADG: 3.83 lbs. • SC: 36

HOOKS SHEAR FORCE 38K
S D S ALUMNI 115X
S D S QUEEN 801U

G A R GAME ON
BDV MS GAME ON Z26
BDV MS GRAND MASTER X5

CE	BW	WW	YW	MCE	M	MW	CW	YG	MB	BF	REA	API	TI
13.6	-0.2	63.9	105.9	9.9	25.9	57.9	33.1	-0.26	0.73	-0.022	0.93	156.0	82.6

We used a new high API sire on some of our cows this season Alumni. He turned out to be more of a power bull that adds muscle and fleshing ability. We used him on heifers but would not recommend him for that use. We think his sons will make excellent cow bulls that will add fleshing ability and substance to his calves. This bulls dam is a very well made Game On daughter expect good doing calves that make top feeding cattle and his daughters will make great cows. This bull weaned off at 762lbs actual out of a two year old.

Lat
38

87B

Black • Homo Polled • SimAngus 3/4 Blood Bull
ASA# 2913164 • Tattoo: 87B • BD: 3/21/14
Act. BW: 87 lbs. • Act. WW: 717 lbs. • Adj. WW: 724 lbs. • Ratio: 104
Adj YW: 1300 lbs. • ADG: 3.60 lbs. • SC: 35.5

KS BLACK DIAMOND W992
TRAXS DOC Z52
SRS S21

TNT DUAL FOCUS T249
BDV MS DUAL FOCUS X37
BDV MS SHEAR FORCE U31

CE	BW	WW	YW	MCE	M	MW	CW	YG	MB	BF	REA	API	TI
10.3	1.7	64.1	99.5	7.3	23.2	55.2	31.8	-0.26	0.28	-0.034	0.82	121.7	68.8

This bull is thick, thick, thick, and eye appealing. This is one that should have the ability to change a set of cows making them easier keeping and full of body. Cattle like this bull are so easy to appreciate. They seem like they should be able to with stand even the toughest environments. This bull is soft made with a big stout sweeping rib cage that has eye appeal and fleshing ability all wrapped up in a nice moderate package.

Lat
40

50B

Homo Black • Polled • SimAngus 1/2 Blood Bull
ASA# 2913087 • Tattoo: 50B • BD: 2/25/14
Act. BW: 88 lbs. • Act. WW: 764 lbs. • Adj. WW: 688 lbs. • Ratio: 99
Adj YW: 1232 lbs. • ADG: 3.40 lbs. • SC: 36.5

PPSR EXTRA CREDIT 20P
BDV FESTUS 149S
BDV J910 WEST POINT 6807

TNT HORIZON P211
BDV ROBIN S39
BDV MISS DARLENE P43

CE	BW	WW	YW	MCE	M	MW	CW	YG	MB	BF	REA	API	TI
10.7	1.2	58.5	84.0	7.0	24.0	53.2	21.6	-0.12	0.32	-0.003	0.51	117.5	65.0

A thick deep-sided bull with lots of good wrapped up in a neat easy fleshing package. These 149S sons just seem to be the easiest keeping kind. This bulls dam always seems to bring a great one to the weaning pen this time at 764lbs on October 8th. I like her kind, moderate easy fleshing and efficient wrapped up in 1250lbs of mother cow.



42

Lat
37

4B

Homo Black • Polled • SimAngus 1/2 Blood Bull
ASA# 2912992 • Tattoo: 4B • BD: 1/31/14
Act. BW: 78 lbs. • Act. WW: 772 lbs. • Adj. WW: 625 lbs. • Ratio: N/C
Adj YW: 1196 lbs. • ADG: 3.57 lbs. • SC: 35.5

PPSR EXTRA CREDIT 20P
BDV FESTUS 149S
BDV J910 WEST POINT 6807

S A V FINAL ANSWER 0035
BDV MS FINAL ANSWER Y11
BDV MS FORTUNATE W38

CE	BW	WW	YW	MCE	M	MW	CW	YG	MB	BF	REA	API	TI
11.4	0.9	70.3	102.0	9.7	23.7	58.8	31.6	-0.07	0.35	-0.009	0.42	129.2	73.2

This bull is a twin. Right from the start he showed what he was made of. For most of the summer he was the one that always caught our attention. He is a heavy muscled bull that is out of a powerful three-year-old dam. His actual weaning weight was 772lbs on October 8th. Being a twin and being an older calf didn't help his 205-day adjustment, he should have got a dam adjustment but because of him being a twin they did not adjust him. A smart cattlemen will buy this bull and look as his actual performance. His daughters will be excellent.

Lat
39

10B

Homo Black • Polled • SimAngus 1/2 Blood Bull
ASA# 2913005 • Tattoo: 10B • BD: 2/3/14
Act. BW: 90 lbs. • Act. WW: 734 lbs. • Adj. WW: 629 lbs. • Ratio: 90
Adj YW: 1319 lbs. • ADG: 4.31 lbs. • SC: 37

APEX WINDY 078
APEX HIGH POINT 162
APEXETTE ROSE 8021

TRIPLE C INVASION R47K
BDV MS INVASION X32
BDV MS FULL FORCE U91

CE	BW	WW	YW	MCE	M	MW	CW	YG	MB	BF	REA	API	TI
5.7	1.1	60.8	93.7	5.7	26.1	56.5	27.5	-0.13	0.34	-0.019	0.48	104.1	66.7

Here is a bull that really took off and showed his stuff post weaning. His dam is a moderate framed, easy keeping cow with a real nice udder. His sire is the performance packed APEX High Point, the powerful Windy 078 son. There is a ton of good in this thick made bull. Actual weaning weight was 734lbs.

Lat
41

62B

Homo Black • Homo Polled • SimAngus 3/4 Blood Bull
ASA# 2913111 • Tattoo: 62B • BD: 3/6/14
Act. BW: 91 lbs. • Act. WW: 759 lbs. • Adj. WW: 719 lbs. • Ratio: 103
Adj YW: 1337 lbs. • ADG: 3.86 lbs. • SC: 38.5

MR NLC UPGRADE U8676
LRS FLEX 802Z
LRS MS BENET TOTAL 802U

CIRCLE S LEACHMAN 600U
CVF MISS MT HOOD
CVF MISS SHOCK WAVE

CE	BW	WW	YW	MCE	M	MW	CW	YG	MB	BF	REA	API	TI
10.9	1.3	63.3	99.8	9.9	27.5	59.2	31.4	-0.26	0.29	-0.041	0.75	127.0	69.6

Here is a performance bull with a dam that just doesn't miss. These flex cattle are the kind to sire extra pay weight and extra body. Use this bull to sire calves that excel all the way through the chain.

Lat
42

26B

Homo Black • Polled • SimAngus 1/2 Blood Bull
ASA# 2913047 • Tattoo: 26B • BD: 2/16/14
Act. BW: 88 lbs. • Act. WW: 714 lbs. • Adj. WW: 655 lbs. • Ratio: 94
Adj YW: 1298 lbs. • ADG: 4.02 lbs. • SC: 38

WHEATLAND BULL 680S
KS BLACK DIAMOND W992
KS KAYLA J497

DUNLOUISE CORTACHY BOY D137
BDV Y111 OF CORTACHY BOY
BDV P404 OF 878

CE	BW	WW	YW	MCE	M	MW	CW	YG	MB	BF	REA	API	TI
6.2	1.8	53.8	83.6	5.5	19.9	46.8	22.7	-0.24	0.17	-0.022	0.74	93.1	57.5

This bull gets the award of being the thickest, deepest, easiest keeping bull in the offering. His dam gets the award for being the most efficient cow when it comes to high percentage of body weight weaned. She is not a big cow and it was eye opening watching this calf nurse. If you want to add capacity to your cows this bull is a great place to start. Cattle like this look like they could survive on little or no feed.

43 73B

Homo Black • Polled • SimAngus 1/2 Blood Bull
 ASA# 2913136 • Tattoo: 73B • BD: 3/15/14
 Act. BW: 83 lbs. • Act. WW: 680 lbs. • Adj. WW: 671 lbs. • Ratio: 96
 Adj YW: 1306 lbs. • ADG: 3.96 lbs. • SC: 34.5

MYTTY IN FOCUS RC CLUB KING 040R
BDV TORQUE 912W **BDV MS CLUB KING X49**
 BDV R523 OF HARTTRAVELER CVF MISS MAGIC

CE	BW	WW	YW	MCE	M	MW	CW	YG	MB	BF	REA	API	TI
12.3	0.9	65.6	96.9	9.3	16.0	48.8	28.7	-0.14	0.33	-0.025	0.48	128.2	69.5

Here is a nice make Torque son that displays a lot of his sires' characteristics. He is moderate sized easy fleshing and will sire calves that can withstand the tough conditions when feed is in tighter supply.

44 70B

Black • Polled • SimAngus 1/2 Blood Bull
 ASA# 2913128 • Tattoo: 70B • BD: 3/12/14
 Act. BW: 87 lbs. • Act. WW: 706 lbs. • Adj. WW: 672 lbs. • Ratio: 96
 Adj YW: 1171 lbs. • ADG: 3.12 lbs. • SC: 35

MYTTY IN FOCUS PPSR EXTRA CREDIT 20P
BDV TORQUE 912W **BDV HAILEY S33**
 BDV R523 OF HARTTRAVELER BDV MARISSA L22

CE	BW	WW	YW	MCE	M	MW	CW	YG	MB	BF	REA	API	TI
11.6	0.3	59.5	85.4	9.3	23.9	53.7	21.1	-0.18	0.27	-0.022	0.51	122.8	65.8

This is a well made Torque son that is out of a cow that has always produced in the Top percentile. This is her last calf as she got hurt and we sold her in early summer. There is a lot of good genes running through his veins, don't over look him.

45 64B

Black • Polled • SimAngus 1/2 Blood Bull
 ASA# 2913118 • Tattoo: 64B • BD: 3/10/14
 Act. BW: 89 lbs. • Act. WW: 753 lbs. • Adj. WW: 727 lbs. • Ratio: 104
 Adj YW: 1285 lbs. • ADG: 3.49 lbs. • SC: 35

MR NLC UPGRADE U8676 H A R B DENALI 788 J H
LRS FLEX 802Z **BDV MS DENALI 0X2**
 LRS MS BENET TOTAL 802U CVF MISS RIVER CITY

CE	BW	WW	YW	MCE	M	MW	CW	YG	MB	BF	REA	API	TI
12.6	0.0	65.1	104.8	9.8	31.0	63.6	32.5	-0.14	0.45	-0.021	0.56	137.9	75.6

Here is a calf that performs very well weaned at 753lbs and ratioing 104. He is very fancy and eye catching. His dam is one that certainly puts the wow factor on you when you see her. Very complete big volume and perfect uttered. This bull is certain to add eye appeal and maternal qualities. His calves should be heavy at weaning.

46 48B

Homo Black • Homo Polled • SimAngus 1/2 Blood Bull
 ASA# 2913079 • Tattoo: 48B • BD: 2/23/14
 Act. BW: 84 lbs. • Act. WW: 738 lbs. • Adj. WW: 727 lbs. • Ratio: 104
 Adj YW: 1276 lbs. • ADG: 3.43 lbs. • SC: 35.5

S A V FINAL ANSWER 0035 BDV CLICKER 27T
COLEMAN REGIS 904 **BDV MS CLICKER Z53**
 COLEMAN DONNA 714 BDV MS FULL FORCE U91

CE	BW	WW	YW	MCE	M	MW	CW	YG	MB	BF	REA	API	TI
16.2	-1.0	72.8	112.0	15.5	20.5	56.9	34.9	-0.13	0.33	0.002	0.73	153.6	77.5

This bull is a long bodied high performance Colman Regis son, his two-year-old dam by Clicker really proved herself with this good calf. Only 84lbs at birth and an actual weaning weight on October 8th of 738lbs. If long bodied cattle with eye appeal are what you are like, this Regis son should do the job. With the added bonuses of calving ease and introducing the powerful Donna Cow family to your herd.

47 5B

Homo Black • Homo Polled • SimAngus 1/2 Blood Bull
 ASA# 2912996 • Tattoo: 5B • BD: 1/31/14
 Act. BW: 82 lbs. • Act. WW: 747 lbs. • Adj. WW: 677 lbs. • Ratio: 97
 Adj YW: 1285 lbs. • ADG: 3.80 lbs. • SC: 36

HOOKS SHEAR FORCE 38K BDV CLICKER 27T
S D S ALUMNI 115X **BDV MS CLICKER Z86**
 S D S QUEEN 801U BDV W923 OF PREDESTINED

CE	BW	WW	YW	MCE	M	MW	CW	YG	MB	BF	REA	API	TI
13.2	0.8	63.6	106.6	12.6	23.9	55.7	35.0	-0.19	0.72	-0.016	0.78	155.5	80.3

Here is an Alumni son with a little extra thickness 82lbs at birth out of a good two-year-old Clicker daughter. He was 747lbs when weaned on October 8th. This bull should work well on a young set of cows or some that need some extra calving ease. I don't necessarily call the Alumni's heifer bulls, however they will calve easy on cows. If high marbling cattle are what you desire, here is one of the best.

48 109B

Homo Black • Polled • SimAngus 1/2 Blood Bull
 ASA# 2913201 • Tattoo: 109B • BD: 4/1/14
 Act. BW: 93 lbs. • Act. WW: 761 lbs. • Adj. WW: 781 lbs. • Ratio: 112
 Adj YW: 1384 lbs. • ADG: 3.77 lbs. • SC: 35.5

MR NLC UPGRADE U8676 BDV FINE TUNE 36K
LRS FLEX 802Z **LRS MS FINE TUNE 659S**
 LRS MS BENET TOTAL 802U LRS MS A TRAVELER 003K

CE	BW	WW	YW	MCE	M	MW	CW	YG	MB	BF	REA	API	TI
9.3	1.7	75.0	118.4	5.6	20.0	57.5	42.8	-0.06	0.50	-0.017	0.46	125.1	78.6

This Flex son has some performance in his tank, he is one of the younger bulls in the sale but was ranked 7th out of 123 contemporaries. He indexed 112 at weaning making him one of the high-octane bulls. His is like all the Flex cattle. Long bodied with some frame and lots of performance.

49 68B

Homo Black • Polled • SimAngus 1/2 Blood Bull
 ASA# 2913125 • Tattoo: 68B • BD: 3/12/14
 Act. BW: 90 lbs. • Act. WW: 773 lbs. • Adj. WW: 742 lbs. • Ratio: 106
 Adj YW: 1318 lbs. • ADG: 3.60 lbs. • SC: 35.5

APEX WINDY 078 ES DAKOTA NK68
APEX HIGH POINT 162 **BDV MISS KELLY R17**
 APEXETTE ROSE 8021 MISS PRICKLY PEAR 331N

CE	BW	WW	YW	MCE	M	MW	CW	YG	MB	BF	REA	API	TI
4.3	2.5	76.1	121.3	4.1	30.9	68.9	45.8	-0.08	0.20	-0.036	0.40	92.9	71.2

Here is a long bodied High Point son that will help you put length of body in your calves. Not only is he long but he also has some top performance in him, as well he blends the 600U line in with the great WINDY 078 bull. Use this bull to add length and a little more frame. He should work well on a set of smaller thicker type cows.

50 22B

Homo Black • Polled • SimAngus 1/2 Blood Bull
 ASA# 2913039 • Tattoo: 22B • BD: 2/15/14
 Act. BW: 77 lbs. • Act. WW: 798 lbs. • Adj. WW: 678 lbs. • Ratio: N/C
 Adj YW: 1209 lbs. • ADG: 3.32 lbs. • SC: 35

S A V FINAL ANSWER 0035 S A V PIONEER 7301
TNT TUITION U238 **BDV MS PIONEER Z14**
 TNT MISS S68 BDV MS TRADITION X28

CE	BW	WW	YW	MCE	M	MW	CW	YG	MB	BF	REA	API	TI
9.7	0.7	73.4	117.1	6.7	19.5	56.2	40.6	-0.14	0.55	-0.007	0.76	131.9	80.5

This bull is certainly exciting to look at. He was born a twin but that did not stop him from weaning off the cow at 798lbs on October 8th out of a real good two-year-old dam. Being a twin hurt his 205 adjustment because he didn't receive the two-year-old heifer adjustment. But don't let that bother you, actual weaning weight is what you get paid on and this calf certainly held his own. I think this bull will sire excellent replacement females and pay weight will be evident in his feeder calves with Pioneer and Tuition genes.

51 **44B**

Black • Polled • SimAngus 1/2 Blood Bull
 ASA# 2913074 • Tattoo: 44B • BD: 2/21/14
 Act. BW: 93 lbs. • Act. WW: 763 lbs. • Adj. WW: 694 lbs. • Ratio: 100
 Adj YW: 1347 lbs. • ADG: 4.08 lbs. • SC: 37

S A V FINAL ANSWER 0035
COLEMAN REGIS 904
 COLEMAN DONNA 714

DRS J91 OUTBACK 604S
THSR X089
 TRI E MISS N107

CE	BW	WW	YW	MCE	M	MW	CW	YG	MB	BF	REA	API	TI
13.5	0.2	63.7	97.9	13.9	27.5	59.4	28.5	-0.16	0.30	-0.001	0.72	137.6	70.3

Here is an eye catching Regis son that is long bodied and stylish. He is a real outcross to our program and most programs as well. His daughters should be exceptional, as udder quality is very good.

52 **15B**

Homo Black • Polled • SimAngus 1/2 Blood Bull
 ASA# 2913023 • Tattoo: 15B • BD: 2/10/14
 Act. BW: 83 lbs. • Act. WW: 818 lbs. • Adj. WW: 757 lbs. • Ratio: 109
 Adj YW: 1298 lbs. • ADG: 3.38 lbs. • SC: 38

HOOKE SHEAR FORCE 38K
S D S ALUMNI 115X
 S D S QUEEN 801U

RFS W109
BDV MS SUMMIT Z83
 BDV W912 OF 4-SEASONS

CE	BW	WW	YW	MCE	M	MW	CW	YG	MB	BF	REA	API	TI
13.2	1.2	82.9	130.5	10.9	20.6	62.1	49.2	-0.13	0.62	-0.004	0.84	152.7	87.9

Here is a heavy weaning Alumni bull coming off his two-year-old dam at 818lbs on October 8th. He posted a 109-weaning ratio and ranked in the top of his contemporary group. These alumni calves have a lot of marbling and carcass bred into them.

53 **107B**

Homo Black • Homo Polled • SimAngus 1/2 Blood Bull
 ASA# 2913199 • Tattoo: 107B • BD: 4/2/14
 Act. BW: 94 lbs. • Act. WW: 706 lbs. • Adj. WW: 741 lbs. • Ratio: 106
 Adj YW: 1411 lbs. • ADG: 4.19 lbs. • SC: 35.5

MR NLC UPGRADE U8676
LRS FLEX 802Z
 LRS MS BENET TOTAL 802U

S A V FOUR SEASONS 5231
BDV MS 4-SEASONS X23
 BDV MISS LISA R9

CE	BW	WW	YW	MCE	M	MW	CW	YG	MB	BF	REA	API	TI
9.0	2.7	77.2	120.4	5.5	24.1	62.7	45.5	-0.08	0.32	0.005	0.73	113.1	74.5

Indexing 107 at weaning this young Flex son certainly performed very well. He is long made and has some body depth and width as well. His 4-Seasons dam is a hard working perfect uttered cow with lots of eye appeal. This calf should sire extra pay weight and daughters that make excellent momma cows.

54 **31B**

Homo Black • Homo Polled • SimAngus 1/2 Blood Bull
 ASA# 2913053 • Tattoo: 31B • BD: 2/18/14
 Act. BW: 88 lbs. • Act. WW: 710 lbs. • Adj. WW: 680 lbs. • Ratio: 98
 Adj YW: 1320 lbs. • ADG: 4.00 lbs. • SC: 36

DIKEMANS SURE BET
TJ SHARPER IMAGE 809U
 T J MISS BANDO S27

LRS PREFERRED STOCK 370C
BDV MS PREF STOCK Z41
 ANCHOR FAME 105

CE	BW	WW	YW	MCE	M	MW	CW	YG	MB	BF	REA	API	TI
7.3	2.7	82.7	132.7	9.9	20.2	61.5	52.8	-0.04	0.32	-0.022	0.48	116.5	77.3

This Sharper Image son is very clean fronted and long made. His two-year-old dam raised him to 710lbs on October 8th. Use him on a set of smaller framed, thick-bodied cows and enjoy a set of fancy well made calves.

55 **7B**

Homo Black • Polled • SimAngus 1/2 Blood Bull
 ASA# 2913000 • Tattoo: 7B • BD: 2/3/14
 Act. BW: 55 lbs. • Act. WW: 770 lbs. • Adj. WW: 635 lbs. • Ratio: N/C
 Adj YW: 1184 lbs. • ADG: 3.43 lbs. • SC: 39.5

S A V FINAL ANSWER 0035
TNT TUITION U238
 TNT MISS S68

THSR FORESIGHT U801
BDV MS FORESIGHT Y34
 BDV JENNY T56

CE	BW	WW	YW	MCE	M	MW	CW	YG	MB	BF	REA	API	TI
9.9	0.6	64.1	98.6	5.8	16.3	48.3	29.5	-0.17	0.43	-0.018	0.61	122.3	71.5

This bull was born a twin out of a three-year-old dam. He was very small at birth only 55lbs, yet he weighed 770lbs on October 8th. Again being a twin they didn't adjust him for 205 days with his young mother, three-year-old adjustment. Don't be fooled these Tuition calves weigh up at sale time as you can see by his actual weaning data. Actual weight is pay weight and this long spined bull proves that he offers plenty.

56 **40B**

Homo Black • Polled • SimAngus 3/4 Blood Bull
 ASA# 2913066 • Tattoo: 40B • BD: 2/21/14
 Act. BW: 95 lbs. • Act. WW: 792 lbs. • Adj. WW: 711 lbs. • Ratio: 102
 Adj YW: 1369 lbs. • ADG: 4.11 lbs. • SC: 37

MR NLC SUPERIOR S6018
TNT TANKER U263
 TNT MISS S17

DRS J91 OUTBACK 604S
THSR X087
 EAR ANITA E754

CE	BW	WW	YW	MCE	M	MW	CW	YG	MB	BF	REA	API	TI

This Tanker son pressed the scale down well on October 8th weighing in at 792lbs. The tankers are known for their ability to wean heavy and make exceptional daughters. This bull is easy to like with his stylish body style. He is a little flighty at times but when in the bunch he is just fine. You will probably not even notice him most of the time, but once in a while he gets a little tight.

57 **94B**

Homo Black • Homo Polled • SimAngus 1/2 Blood Bull
 ASA# 2913176 • Tattoo: 94B • BD: 3/24/14
 Act. BW: 83 lbs. • Act. WW: 743 lbs. • Adj. WW: 768 lbs. • Ratio: 110
 Adj YW: 1272 lbs. • ADG: 3.15 lbs. • SC: 36.5

KS BLACK DIAMOND W992
TRAXS DOC Z52
 SRS S21

S A V NET WORTH 4200
BDV X034 OF NET WORTH
 BDV S641 OF 112

CE	BW	WW	YW	MCE	M	MW	CW	YG	MB	BF	REA	API	TI
8.9	1.7	83.9	138.2	6.2	26.1	68.0	54.7	-0.08	0.51	-0.016	0.69	127.7	85.2

By now you have probably noticed that these Doc calves have another dimension called body width. This bull certainly is a chunk, deep bodied and wide based. When you blend Doc and Net Worth together you can only expect the best. Use this guy to add extra body to his calves.

58 **61B**

Homo Black • Polled • SimAngus 1/2 Blood Bull
 ASA# 2913110 • Tattoo: 61B • BD: 3/6/14
 Act. BW: 79 lbs. • Act. WW: 708 lbs. • Adj. WW: 724 lbs. • Ratio: 104
 Adj YW: 1245 lbs. • ADG: 3.26 lbs. • SC: 35

GW PREMIUM BEEF 021TS
GW PREM BEEF 612Z
 GW MISS GPRD 259X

TJ SHARPER IMAGE 809U
BDV MS SHARPER IMAGE Z34
 BDV MS X17 OF 149S

CE	BW	WW	YW	MCE	M	MW	CW	YG	MB	BF	REA	API	TI
13.2	0.1	78.0	124.7	10.1	22.6	61.6	44.3	-0.07	0.43	-0.006	0.59	142.0	81.5

This bull is so smooth in his make up out of a two-year-old heifer. He displays that smooth calving ease look with style. Use him on a set of young cows that need calving ease and on large heifers. This bull's own two-year-old dam certainly raised a powerful first calf with this 104 indexing rascal.

59 **105B**

Homo Black • Polled • SimAngus 1/2 Blood Bull
 ASA# 2913195 • Tattoo: 105B • BD: 3/30/14
 Act. BW: 78 lbs. • Act. WW: 689 lbs. • Adj. WW: 765 lbs. • Ratio: 110
 Adj YW: 1395 lbs. • ADG: 3.94 lbs. • SC: 35

GW PREMIUM BEEF 021TS
GW PREM BEEF 612Z
 GW MISS GPRD 259X

G A R GAME ON
BDV MS GAME ON Z28
 BDV MS TRADITION X56

CE	BW	WW	YW	MCE	M	MW	CW	YG	MB	BF	REA	API	TI
14.0	-0.9	67.1	112.0	11.3	22.5	56.0	35.7	-0.22	0.52	-0.036	0.71	149.5	79.4

These premium beef sons surely come easy and are smooth in their make up. This bull is out of a two year old Game On daughter that raised a nice high indexing calf on her maiden voyage. 105B could be used on bigger type heifers or smaller cows to improve calving ease his daughters should be valuable.

60 **59B**

Homo Black • Homo Polled • SimAngus 1/2 Blood Bull
 ASA# 2913106 • Tattoo: 59B • BD: 3/5/14
 Act. BW: 82 lbs. • Act. WW: 702 lbs. • Adj. WW: 710 lbs. • Ratio: 102
 Adj YW: 1286 lbs. • ADG: 3.60 lbs. • SC: 35

GW PREMIUM BEEF 021TS
GW PREM BEEF 612Z
 GW MISS GPRD 259X

VERMILION X FACTOR
BDV MS X FACTOR Z61
 CVF MISS SPIDER

CE	BW	WW	YW	MCE	M	MW	CW	YG	MB	BF	REA	API	TI
11.5	0.3	74.8	118.3	10.1	21.2	58.6	40.7	-0.21	0.40	-0.043	0.71	135.3	78.9

Another 612Z son that exhibits that smooth look. We have used him on our yearling heifers for a good calving experience as we enjoyed trouble free calving out of him. When used on power cows such as this bulls X Factor dam, he also proved to sire calves that weaned well. This bull should sire pay weight and daughters with excellent udder quality.

61 **32B**

Homo Black • Polled • SimAngus 1/2 Blood Bull
 ASA# 2913054 • Tattoo: 32B • BD: 2/18/14
 Act. BW: 85 lbs. • Act. WW: 727 lbs. • Adj. WW: 704 lbs. • Ratio: 101
 Adj YW: 1240 lbs. • ADG: 3.35 lbs. • SC: 35.5

S A V FINAL ANSWER 0035
TNT TUITION U238
 TNT MISS S68

BDV FESTUS 149S
BDV MS FESTUS Z24
 BDV MS SOLUTION U7

CE	BW	WW	YW	MCE	M	MW	CW	YG	MB	BF	REA	API	TI
8.6	1.6	77.8	118.6	6.0	17.6	56.5	42.6	-0.10	0.51	-0.018	0.56	125.1	80.0

Here is a thick, deep-bodied Tuition son out of a powerful 149S daughter. You should experience deep-bodied easy fleshing genetics with this guy. We chose him and his to year old dam to represent our SimAngus program on the Montana Angus Tour this fall. Use him to produce those good easy fleshing, easy keeping cows that are low maintenance. The steer calves will be rock solid feeding calves.

62 **52B**

Homo Black • Homo Polled • SimAngus 1/2 Blood Bull
 ASA# 2913090 • Tattoo: 52B • BD: 2/26/14
 Act. BW: 82 lbs. • Act. WW: 730 lbs. • Adj. WW: 667 lbs. • Ratio: 96
 Adj YW: 1185 lbs. • ADG: 3.24 lbs. • SC: 36.5

S A V FINAL ANSWER 0035
TNT TUITION U238
 TNT MISS S68

S A V 5175 BANDO 502
BDV MS BOX CAR X88
 BDV MISS MONTANA T42

CE	BW	WW	YW	MCE	M	MW	CW	YG	MB	BF	REA	API	TI
9.9	-0.1	58.3	93.4	6.5	24.3	53.5	25.7	-0.17	0.51	-0.020	0.56	127.0	71.9

Here is a long made, fancy Tuition son. His powerful Boxcar dam certainly is easy to appreciate super uddered, fancy made and an excellent calf producer. This bull weighed in at 730lbs October 8th. Use this bull to add some style to your calves. His daughters will be milky, moderate-sized cows.

63 **49B**

Homo Black • Homo Polled • SimAngus 1/2 Blood Bull
 ASA# 2913086 • Tattoo: 49B • BD: 2/24/14
 Act. BW: 84 lbs. • Act. WW: 698 lbs. • Adj. WW: 683 lbs. • Ratio: 98
 Adj YW: 1291 lbs. • ADG: 3.80 lbs. • SC: 35.5

S A V FINAL ANSWER 0035
TNT TUITION U238
 TNT MISS S68

LRS PREFERRED STOCK 370C
BDV MS PREF STCOK Z35
 B D V P414 OF EMULATION EXT

CE	BW	WW	YW	MCE	M	MW	CW	YG	MB	BF	REA	API	TI
8.1	1.2	73.3	116.6	5.2	15.3	51.9	41.2	-0.13	0.46	-0.026	0.59	119.6	76.8

Here is a Tuition son that is long spined, and attractive. Use him to add length and eye appeal to your calves. He should work well on a set of British bred cows.

64 **39B**

Black • Polled • SimAngus 1/2 Blood Bull
 ASA# 2913065 • Tattoo: 39B • BD: 2/20/14
 Act. BW: 85 lbs. • Act. WW: 788 lbs. • Adj. WW: 754 lbs. • Ratio: 108
 Adj YW: 1298 lbs. • ADG: 3.40 lbs. • SC: 37

GW PREMIUM BEEF 021TS
GW PREM BEEF 612Z
 GW MISS GPRD 259X

BDV TORQUE 912W
BDV MS TORQUE Z63
 BDV MS SWEET MEAT X70

CE	BW	WW	YW	MCE	M	MW	CW	YG	MB	BF	REA	API	TI
13.4	-0.2	70.8	111.3	10.8	21.2	56.6	35.9	-0.11	0.43	-0.016	0.54	142.7	77.6

A Premium Beef out of a Torque two-year-old dam. This worked; this bull will sire moderate sized daughters that excel in udder quality. Look at his own 205 weight of 754 to index 108; his actual weight on October 8th was 788lbs. This is not bad for a two-year-old heifer.

65 **53B**

Homo Black • Polled • SimAngus 3/4 Blood Bull
 ASA# 2913091 • Tattoo: 53B • BD: 2/27/14
 Act. BW: 90 lbs. • Act. WW: 717 lbs. • Adj. WW: 657 lbs. • Ratio: 94
 Adj YW: 1247 lbs. • ADG: 3.69 lbs. • SC: 35.5

WHEATLAND BULL 680S
KS BLACK DIAMOND W992
 KS KAYLA J497

B C MATRIX 4132
BDV MS MATRIX X40
 BDV MS PACER U86

CE	BW	WW	YW	MCE	M	MW	CW	YG	MB	BF	REA	API	TI
6.9	2.4	61.1	97.0	6.1	22.1	52.7	31.5	-0.37	-0.04	-0.059	0.96	91.1	58.1

This Black Diamond son is a good-looking Terminal sire prospect. Use him to add performance and style. His cow family is deep sided and do well raising calves. I think they could be a little wetter, but by adding Black Diamond to the mix maybe his heifers might be exceptional as this is Black Diamond claim to fame.



KS BLACK DIAMOND W992
 Sire of Trax Doc & Lots 5, 18, 32, 42, 65

Lot
66

88B

Black • Polled • SimAngus 1/2 Blood Bull
ASA# 2913165 • Tattoo: 88B • BD: 3/22/14
Act. BW: 86 lbs. • Act. WW: 717 lbs. • Adj. WW: 710 lbs. • Ratio: 102
Adj YW: 1209 lbs. • ADG: 3.12 lbs. • SC: 36

MYTTY IN FOCUS
BDV TORQUE 912W
BDV R523 OF HARTTRAVELER

SAS FULL BORE L531
LRS MS FULL BORE 661S
NLC G43 GILANA

CE	BW	WW	YW	MCE	M	MW	CW	YG	MB	BF	REA	API	TI
12.2	0.0	62.6	91.7	11.2	22.3	53.6	24.3	-0.18	0.17	-0.024	0.54	123.6	65.7

This Torque son will be a very good herd sire prospect blending, the Torque bull with Full Bore should make thick-bodied easy fleshing cattle. The daughters will make excellent uttered, hard working cows. His feeder calves should be fancy and easy to sell.

Lot
67

118B

Homo Black • Polled • Purebred Simmental Bull
ASA# 2913219 • Tattoo: 118B • BD: 4/13/14
Act. BW: 92 lbs. • Act. WW: 644 lbs. • Adj. WW: 738 lbs. • Ratio: 106
Adj YW: 1239 lbs. • ADG: 3.15 lbs. • SC: 34.5

MJ MARATHON 6W
TRAXS SOLO Y39
MISS TRAX U839

MR NLC SUPERIOR S6018
BDV MS SUPERIOR X15
DSR BLACK TOPPER M72

CE	BW	WW	YW	MCE	M	MW	CW	YG	MB	BF	REA	API	TI
5.4	3.2	71.1	108.5	7.7	23.9	59.4	39.2	-0.43	-0.07	-0.081	1.06	114.2	65.2

This calf is a tank; he is one of the very youngest calves in the sale. So don't over look him. He will definitely sire, muscle and easy keeping quality. This bull is very well made easy fleshing and heavy muscled with excellent style. His disposition is second to none take him home he will become one of your favorites as a mature bull.

Lot
68

92B

Homo Black • Homo Polled • Purebred Simmental Bull
ASA# 2913174 • Tattoo: 92B • BD: 3/24/14
Act. BW: 88 lbs. • Act. WW: 629 lbs. • Adj. WW: 648 lbs. • Ratio: 93
Adj YW: 1160 lbs. • ADG: 3.20 lbs. • SC: 36

WCS MR TRADITION 732T
BDV NEW TRADITION 131X
BDV GINGER 6S17

SRS RIGHT-ON 22R
BTS HONEY 069X
THSR SHIRLEY S646

CE	BW	WW	YW	MCE	M	MW	CW	YG	MB	BF	REA	API	TI
9.4	1.4	52.4	75.7	8.9	18.7	44.9	17.2	-0.19	0.31	-0.040	0.36	117.1	64.4

Here is a deep soggy purebred. This guy is deep ribbed and easy fleshing also on the young end of the offering. His dam comes from the BLACK TIE herd. She is a fancy deep-sided cow with an excellent udder. Use him on a set of Angus or baldy cows. The result should be powerful sim-cross feeder calves with extra fleshing ability.

Lot
69

120B

Black Star • Polled • SimAngus 1/2 Blood Bull
ASA# 2913222 • Tattoo: 120B • BD: 4/16/14
Act. BW: 78 lbs. • Act. WW: 599 lbs. • Adj. WW: 668 lbs. • Ratio: 96
Adj YW: 1164 lbs. • ADG: 3.10 lbs. • SC: 36

J U COAL BANK 84U
MRA COAL BANK 1243
MRA RUBY 9250

BDV NORTHWEST 34J
CVF MISS NORTHWEST
CVF MISS BLACK SIGNAL

CE	BW	WW	YW	MCE	M	MW	CW	YG	MB	BF	REA	API	TI
8.9	0.4	52.8	80.8	8.2	23.3	49.7	19.0	-0.20	0.16	-0.018	0.59	106.1	58.9

This is a fancy well-muscled bull that is the very youngest in the offering. He is out of the high ultra sounding Coal Bank sire and a very attractive blaze faced 12-year-old dam. Don't overlook this well constructed calf because of his age. He is out of a cow that consistently weans heavy. I think he could sire some show steers.

Lot
70

66B

Homo Black • Polled • SimAngus 1/2 Blood Bull
ASA# 2913121 • Tattoo: 66B • BD: 3/10/14
Act. BW: 83 lbs. • Act. WW: 665 lbs. • Adj. WW: 689 lbs. • Ratio: 99
Adj YW: 1209 lbs. • ADG: 3.25 lbs. • SC: 35

SITZ ALLIANCE 6595
KMK ALLIANCE 6595 I87
G A R EXT 916

TNT AXIS X307
BDV MS AXIS Z39
BDV MISS DONNA P12

CE	BW	WW	YW	MCE	M	MW	CW	YG	MB	BF	REA	API	TI
9.2	0.2	76.4	116.1	6.5	21.2	59.4	39.1	-0.03	0.35	-0.006	0.42	121.7	77.2

Here is a well-made I87 son; he is bred to have some performance. The I87 cattle are well accepted within the Angus breed. He sires excellent performance and his daughters make great cows.

Lot
71

37B

Homo Black • Polled • SimAngus 3/4 Blood Bull
ASA# 2913061 • Tattoo: 37B • BD: 2/20/14
Act. BW: 77 lbs. • Act. WW: 657 lbs. • Adj. WW: 643 lbs. • Ratio: 92
Adj YW: 1147 lbs. • ADG: 3.15 lbs. • SC: 35

HOOKS SHEAR FORCE 38K
RCR STETSON T17
RCR SADIE R29

TNT DUAL FOCUS T249
BDV MS DUAL FOCUS Z13
BDV ROBIN S39

CE	BW	WW	YW	MCE	M	MW	CW	YG	MB	BF	REA	API	TI
15.3	-0.7	59.0	87.9	9.6	24.7	54.2	21.2	-0.26	0.43	-0.028	0.73	148.7	72.9

This bull and Lot 72 are light birth weight heifer bulls, out of the high API sire Stetson. Use them for extreme calving ease and carcass merit. These bulls should work well on heifers, and sire calves that are respectable at weaning.

Lot
72

45B

Homo Black • Polled • SimAngus 3/4 Blood Bull
ASA# 2913076 • Tattoo: 45B • BD: 2/22/14
Act. BW: 67 lbs. • Act. WW: 615 lbs. • Adj. WW: 605 lbs. • Ratio: 87
Adj YW: 1120 lbs. • ADG: 3.22 lbs. • SC: 35.5

HOOKS SHEAR FORCE 38K
RCR STETSON T17
RCR SADIE R29

BDV TORQUE 912W
BDV MS TORQUE Z73
BDV MS RED IRON X89

CE	BW	WW	YW	MCE	M	MW	CW	YG	MB	BF	REA	API	TI
16.0	-2.1	55.4	81.5	11.2	25.4	53.1	15.3	-0.34	0.34	-0.043	0.78	149.9	70.6

This bull is one I recommend for heifers very light at birth and respectable weaning performance. Use him and Lot 71 to sire a nice group of calving ease, high marbling calves.

Lot
73

84B

Homo Black • Polled • SimAngus 1/2 Blood Bull
ASA# 2913160 • Tattoo: 84B • BD: 3/20/14
Act. BW: 86 lbs. • Act. WW: 614 lbs. • Adj. WW: 616 lbs. • Ratio: 88
Adj YW: 1152 lbs. • ADG: 3.35 lbs. • SC: 35

MYTTY IN FOCUS
BDV TORQUE 912W
BDV R523 OF HARTTRAVELER

SS EBONY'S GRANDMASTER
BDV MS GRAND MASTER X26
BDV RENEE S43

CE	BW	WW	YW	MCE	M	MW	CW	YG	MB	BF	REA	API	TI
10.1	0.7	52.6	79.5	6.5	17.9	44.2	18.6	-0.15	0.31	-0.013	0.47	113.7	61.5

If you like moderate framed, safe calving ease and stylish cattle that offer deep easy keeping genetics, here you go. With Torque in his lineage you know the daughters will make good cows.

Lot 74 **111B**

Homo Black • Polled • SimAngus 1/2 Blood Bull
 ASA# 2913204 • Tattoo: 111B • BD: 4/3/14
 Act. BW: 77 lbs. • Act. WW: 595 lbs. • Adj. WW: 626 lbs. • Ratio: 90
 Adj YW: 1147 lbs. • ADG: 3.26 lbs. • SC: 34.5

MYTTY IN FOCUS SAC MR MT 73G
BDV TORQUE 912W **LRS MS MT 426P**
 BDV R523 OF HARTTRAVELER LRS MS NICLEGACY 220M

CE	BW	WW	YW	MCE	M	MW	CW	YG	MB	BF	REA	API	TI
13.9	-1.9	46.8	71.0	8.2	22.5	45.9	9.7	-0.19	0.35	-0.023	0.42	132.4	63.5

Here is a thick made younger bull in the offering. Use this bull to sire thick made easy fleshing calves. Another Torque son that is heavy muscled and moderate framed.

Lot 75 **6B**

Homo Black • Polled • SimAngus 5/8 Blood Bull
 ASA# 2912997 • Tattoo: 6B • BD: 2/1/14
 Act. BW: 78 lbs. • Act. WW: 715 lbs. • Adj. WW: 649 lbs. • Ratio: 93
 Adj YW: 1193 lbs. • ADG: 3.40 lbs. • SC: 34.5

HOOKS SHEAR FORCE 38K BDV TORQUE 912W
S D S GRADUATE 006X **BDV MS TORQUE Z52**
 S D S QUEEN 814U BDV MS SUPERIOR X15

CE	BW	WW	YW	MCE	M	MW	CW	YG	MB	BF	REA	API	TI
14.4	-2.3	66.1	103.4	8.6	26.1	59.2	28.1	-0.30	0.24	-0.027	0.94	135.2	74.0

A light birth weight heifer bull, that still offers decent growth and style. Use him on your heifers to achieve calving ease with decent performance. His actual weaning weight was 715lbs out of a two-year-old heifer.

Fall Bulls

This is a set of bulls have been some of the easiest trouble free calves we have ever worked with. They were born out on the range, checked once a day to be weighed and tagged. They were all born unassisted and raised on the range with no extra care. Usually when the winter gets cold and the grass freezes up we offer creep feed to the Fall bulls, however this set has never seen a creep feeder. They were raised solely on mothers milk and the same feed we feed to the cows.

I think that they are a suburb group with all things considered. They weaned a little lighter than some years. But remember how harsh and cold last winter was. Winter was brutal. These calves were weaned in March and then put on a short test when mid May rolled around they went to grass and summered out on just grass and Crystalix Lic Tubs, no supplemental feed until November. At that time we brought them in, worked them, and put them on chopped hay silage and 8lbs of whole corn, 2lbs of pea screenings and 1lb of pellet ration. These bulls are sound and hard, not fat and soft. You will enjoy a more mature bull that should breed more cows and last for several years. You will notice this set of bulls to be the most uniform set of bulls we have ever offered. We found it very hard to pick catalog order and to choose which bulls would lead off the sale. Quality runs deep in this group of 18 month old bulls.

Lot 77 **137A**

Homo Black • Homo Polled • SimAngus 1/2 Blood Bull
 ASA# 2859436 • Tattoo: 137A • BD: 8/28/13
 Act. BW: 85 lbs. • Act. WW: 826 lbs. • Adj. WW: 853 lbs. • Ratio: 121
 Adj YW: 1413 lbs. • SC: 34

S A V FINAL ANSWER 0035 TJ SHARPER IMAGE 809U
TNT TUITION U238 **BDV MS SHARPERIMAGE 1Y12**
 TNT MISS S68 BDV MS 9W16 OF 149S

CE	BW	WW	YW	MCE	M	MW	CW	YG	MB	BF	REA	API	TI
7.9	2.3	90.0	138.4	6.6	22.4	67.4	55.3	-0.03	0.48	-0.007	0.59	125.2	86.1

This is a big stout SimAngus Tuition son. If you are looking to add length and performance, here is a good place to start. He is just out of a two-year-old dam. She certainly gave her all on her maiden voyage. Ratioed 121 weaning.

Lot 78 **153A**

Homo Black • Polled • SimAngus 3/4 Blood Bull
 ASA# 2859469 • Tattoo: 153A • BD: 9/5/13
 Act. BW: 85 lbs. • Act. WW: 740 lbs. • Adj. WW: 749 lbs. • Ratio: 106
 Adj YW: 1309 lbs. • SC: 41.5

WCS MR TRADITION 732T THSR FORESIGHT U801
BDV NEW TRADITION 131X **BDV MS FORESIGHT X61**
 BDV GINGER 6S17 BDV MARY LOU S1

CE	BW	WW	YW	MCE	M	MW	CW	YG	MB	BF	REA	API	TI
7.4	2.6	70.4	100.0	8.9	12.8	48.0	32.8	-0.13	0.23	-0.036	0.42	112.7	67.5

This 3/4 blood is thick, deep and wide. He should work very well on a wide variety of cows. He weaned off right at 800lbs. This guy will add fleshing ability. He Ratioed at 106 at 205 days.

Lot 76 **180A**

Homo Black • Homo Polled • SimAngus 3/8 Blood Bull
 ASA# 2859524 • Tattoo: 180A • BD: 9/20/13
 Act. BW: 88 lbs. • Act. WW: 680 lbs. • Adj. WW: 775 lbs. • Ratio: 110
 Adj YW: 1335 lbs. • SC: 38.5

J U COAL BANK 84U BDV FESTUS 149S
MRA COAL BANK 1243 **BDV MS FESTUS 1Y37**
 MRA RUBY 9250 BDV MS DAKOTA 8U13

CE	BW	WW	YW	MCE	M	MW	CW	YG	MB	BF	REA	API	TI
9.0	2.2	65.4	103.0	7.0	26.7	59.4	34.6	-0.07	0.39	-0.007	0.47	111.8	69.2

Here is a 3/8 Sim 5/8 Angus bull that is out of the high ultra sounding Coal Bank bull. This calf did exceptionally well. He is a long clean made bull that is a real eye pleaser only out of a two-year-old dam. He will sire excellent feeder calves and his daughters will make great cows. Ratioed 110 at weaning.





79

Lat
79

186A

Black • Polled • SimAngus 5/8 Blood Bull
ASA# 2859534 • Tattoo: 186A • BD: 9/28/13
Act. BW: 88 lbs. • Act. WW: 714 lbs. • Adj. WW: 767 lbs. • Ratio: 109
Adj YW: 1327 lbs. • SC: 40.5

WCS MR TRADITION 732T S A V FOUR SEASONS 5231
BDV NEW TRADITION 131X BDV MS 4-SEASONS 7T35
BDV GINGER 6S17 BDV LACIE R78

CE	BW	WW	YW	MCE	M	MW	CW	YG	MB	BF	REA	API	TI
10.4	1.7	69.6	103.8	7.8	19.0	53.8	34.0	-0.05	0.43	-0.001	0.45	125.8	73.2

What a powerful bull. This guy is long and deep sided. He has a great disposition and a real herd bull look. He is for the cattleman that puts performance at the top of his list. Ratioed 109 at weaning.



80

Lat
80

139A

Homo Black • Polled • SimAngus 3/4 Blood Bull
ASA# 2859440 • Tattoo: 139A • BD: 8/28/13
Act. BW: 82 lbs. • Act. WW: 710 lbs. • Adj. WW: 700 lbs. • Ratio: 99
Adj YW: 1260 lbs. • SC: 39.5

WCS MR TRADITION 732T B D V SOLUTION 603S
BDV NEW TRADITION 131X BDV MS SOLUTION 0X37
BDV GINGER 6S17 BDV VALENTINE 6S20

CE	BW	WW	YW	MCE	M	MW	CW	YG	MB	BF	REA	API	TI
8.2	1.8	66.2	94.6	8.1	17.7	50.8	28.6	-0.10	0.24	-0.029	0.32	114.6	66.8

This is one to put fleshing ability and pounds on the ground. His dam is a definite power cow, she is very easy keeping, deep bodied and with perfect udder. You will like the calves this bull will sire.



81

Lat
81

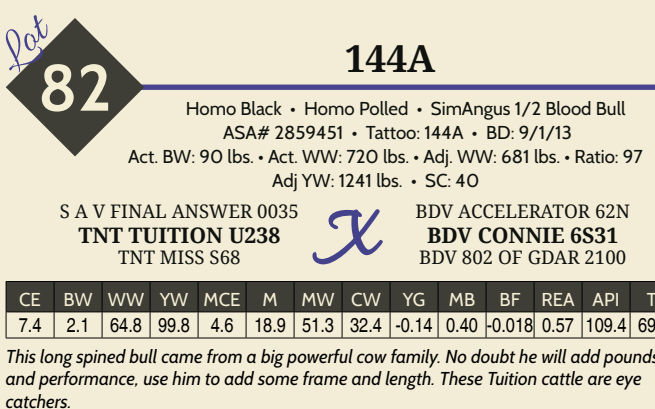
131A

Black • Polled • SimAngus 1/2 Blood Bull
ASA# 2859427 • Tattoo: 131B • BD: 8/24/13
Act. BW: 83 lbs. • Act. WW: 720 lbs. • Adj. WW: 687 lbs. • Ratio: 97
Adj YW: 1247 lbs. • SC: 40

MYTTY IN FOCUS 3C WALLY C240 BLK
BDV TORQUE 912W BDV MS WALLY 9W8
BDV R523 OF HARTTRAVELER BDV MS FULL FORCE 7T28

CE	BW	WW	YW	MCE	M	MW	CW	YG	MB	BF	REA	API	TI
13.5	0.7	59.6	84.7	10.9	18.7	48.5	21.2	-0.22	0.35	-0.029	0.58	133.7	67.2

This bull could be my favorite Fall bull. I appreciate him for his excellent body shape and look. If you are looking to produce replacement cattle with extra rib shape and body mass here is a perfect choice. I believe this bull is what the cattle industry is wanting more of.



81

Lat
82

144A

Homo Black • Homo Polled • SimAngus 1/2 Blood Bull
ASA# 2859451 • Tattoo: 144A • BD: 9/1/13
Act. BW: 90 lbs. • Act. WW: 720 lbs. • Adj. WW: 681 lbs. • Ratio: 97
Adj YW: 1241 lbs. • SC: 40

S A V FINAL ANSWER 0035 BDV ACCELERATOR 62N
TNT TUITION U238 BDV CONNIE 6S31
TNT MISS S68 BDV 802 OF GDAR 2100

CE	BW	WW	YW	MCE	M	MW	CW	YG	MB	BF	REA	API	TI
7.4	2.1	64.8	99.8	4.6	18.9	51.3	32.4	-0.14	0.40	-0.018	0.57	109.4	69.0

This long spined bull came from a big powerful cow family. No doubt he will add pounds and performance, use him to add some frame and length. These Tuition cattle are eye catchers.

Lat
83

121A

Black • Polled • SimAngus 1/2 Blood Bull
ASA# 2859410 • Tattoo: 121A • BD: 8/15/13
Act. BW: 77 lbs. • Act. WW: 736 lbs. • Adj. WW: 672 lbs. • Ratio: 95
Adj YW: 1223 lbs. • SC: 38.5

S A V FINAL ANSWER 0035 CDI FULL FORCE 114P
TNT TUITION U238 BDV MS FULL FORCE 9W50
TNT MISS S68 B D V N306 OF RIGHT TIME

CE	BW	WW	YW	MCE	M	MW	CW	YG	MB	BF	REA	API	TI
11.3	-0.1	64.3	104.7	8.0	23.3	55.5	32.4	-0.16	0.54	-0.018	0.64	136.3	76.5

I like how this Tuition son is made. He is clean made and has that look that pleases. He comes by it honestly, as his dam is one of my picks in our Fall bunch. With Tuition as his sire you will enjoy how his calves grow and perform. The replacement heifers will be the best.

84 **168A**

Homo Black • Polled • SimAngus 1/2 Blood Bull
 ASA# 2859498 • Tattoo: 168A • BD: 9/13/13
 Act. BW: 83 lbs. • Act. WW: 680 lbs. • Adj. WW: 723 lbs. • Ratio: 103
 Adj YW: 1283 lbs. • SC: 38.5

S A V NET WORTH 4200
BDV ASSET 122X
 BDV MISS DARLENE P77

PVF-J 4P14 HYB ROOKIE
BDV MS ROOKIE 0X21
 BDV MISS SIDNEY P79

CE	BW	WW	YW	MCE	M	MW	CW	YG	MB	BF	REA	API	TI
9.4	1.2	68.3	106.0	10.4	29.5	63.6	34.8	-0.19	0.31	-0.035	0.63	121.5	71.8

This could be one of the best made Fall bulls. He is a thick deep bodied stylish bull with eye appeal to burn. He is the kind that will add a strong top and extra rear quarter to his offspring. I would like to slow him down just a little. Ratioed 103 at weaning.

85 **164A**

Homo Black • Polled • SimAngus 3/4 Blood Bull
 ASA# 2859505 • Tattoo: 164A • BD: 9/15/13
 Act. BW: 84 lbs. • Act. WW: 662 lbs. • Adj. WW: 703 lbs. • Ratio: 100
 Adj YW: 1263 lbs. • SC: 39.5

WCS MR TRADITION 732T
BDV NEW TRADITION 131X
 BDV GINGER 6S17

BDV CLICKER 27T
BDV MS CLICKER 0X54
 BDV R525 OF 112

CE	BW	WW	YW	MCE	M	MW	CW	YG	MB	BF	REA	API	TI
9.4	1.5	66.2	100.6	10.7	20.6	53.7	31.9	-0.11	0.36	-0.030	0.39	126.6	74.1

Here is a stylish bull that offers a lot. He brings a top cow family that not only works hard but looks good doing it. His calves should weigh up on sale day and his daughters will work great.

86 **178A**

Homo Black • Polled • SimAngus 1/2 Blood Bull
 ASA# 2859519 • Tattoo: 178A • BD: 9/17/13
 Act. BW: 82 lbs. • Act. WW: 680 lbs. • Adj. WW: 724 lbs. • Ratio: 103
 Adj YW: 1284 lbs. • SC: 38.5

S A V NET WORTH 4200
BDV ASSET 122X
 BDV MISS DARLENE P77

H A R B DENALI 788 J H
BDV MS DENALI 0X12
 BDV MS PREF STOCK 8U5

CE	BW	WW	YW	MCE	M	MW	CW	YG	MB	BF	REA	API	TI
11.8	0.7	65.1	98.2	11.6	32.2	64.8	29.3	-0.15	0.43	-0.036	0.43	136.2	73.9

These Asset cattle are performance cattle with extra length and a little extra frame. If you like cattle that are built to perform, you will like this bull and his 1/2 brothers.

87 **132A**

Homo Black • Homo Polled • SimAngus 1/2 Blood Bull
 ASA# 2859429 • Tattoo: 132A • BD: 8/25/13
 Act. BW: 82 lbs. • Act. WW: 710 lbs. • Adj. WW: 723 lbs. • Ratio: 103
 Adj YW: 1283 lbs. • SC: 35

S A V FINAL ANSWER 0035
TNT TUITION U238
 TNT MISS S68

MR NLC SUPERIOR S6018
BDV MS SUPERIOR 1Y31
 BDV U834 OF BOX CAR

CE	BW	WW	YW	MCE	M	MW	CW	YG	MB	BF	REA	API	TI
7.8	1.3	69.3	109.2	5.7	21.4	56.1	37.0	-0.20	0.40	-0.029	0.73	115.1	73.4

Just like the rest of the Tuitions. Here is a bull that offers style and performance. He is out of a two year old dam that has a great future here. Weaning off over 700lbs. This bull should sire excellent replacements.

88 **176A**

Homo Black • Polled • SimAngus 1/2 Blood Bull
 ASA# 2859516 • Tattoo: 176A • BD: 9/13/13
 Act. BW: 85 lbs. • Act. WW: 728 lbs. • Adj. WW: 753 lbs. • Ratio: 107
 Adj YW: 1313 lbs. • SC: 39

MYTTY IN FOCUS
BDV TORQUE 912W
 BDV R523 OF HARTTRAVELER

TRIPLE C INVASION R47K
BDV MS INVASION 9W34
 BDV MS FULL FORCE 7T38

CE	BW	WW	YW	MCE	M	MW	CW	YG	MB	BF	REA	API	TI
11.9	1.2	68.9	102.2	10.4	19.3	53.7	32.3	-0.12	0.39	-0.018	0.52	132.1	72.8

Want a thick made bull that should add fleshing ability and substance here is a good choice. This bull certainly showed that he is a performance bull. He weaned off heavy to index with the best at 107. His daughters should be easy keepers with an excellent udder.

89 **193A**

Homo Black • Homo Polled • SimAngus 1/2 Blood Bull
 ASA# 2859546 • Tattoo: 193A • BD: 10/5/13
 Act. BW: 85 lbs. • Act. WW: 690 lbs. • Adj. WW: 715 lbs. • Ratio: 101
 Adj YW: 1250 lbs. • SC: 39

MJ MARATHON 6W
TRAXS SOLO Y39
 MISS TRAX U839

BDV 808U OF THUNDER
BDV X035 OF 808U THUNDER
 BDV U831 OF BOX CAR

CE	BW	WW	YW	MCE	M	MW	CW	YG	MB	BF	REA	API	TI

Here is a fancy Solo son that has done a nice job. He is strong topped and eye appealing. He is out of a strong made Angus that puts the look in her calves. His calves will be fancy and his daughters will milk well.

90 **147A**

Homo Black • Polled/Scurred • SimAngus 1/2 Blood Bull
 ASA# 2859461 • Tattoo: 147A • BD: 9/3/13
 Act. BW: 83 lbs. • Act. WW: 722 lbs. • Adj. WW: 726 lbs. • Ratio: 103
 Adj YW: 1286 lbs. • SC: 38.5

S A V NET WORTH 4200
BDV ASSET 122X
 BDV MISS DARLENE P77

B D V SOLUTION 603S
BDV MS SOLUTION 0X35
 BDV MS FULL FORCE 7T37

CE	BW	WW	YW	MCE	M	MW	CW	YG	MB	BF	REA	API	TI
9.2	2.0	68.8	107.7	11.0	28.5	62.9	37.1	-0.10	0.41	-0.025	0.46	125.1	73.1

Here is a bull that will add body shape and volume. He is strong in his build. His dam is a very heavy milking cow that always seems to produce the best. Use him to add value and keep his daughters. They will be wet and have nice udders. He ratioed 103 at weaning.

91 **135A**

Homo Black • Homo Polled • SimAngus 1/2 Blood Bull
 ASA# 2859433 • Tattoo: 135A • BD: 8/26/13
 Act. BW: 89 lbs. • Act. WW: 780 lbs. • Adj. WW: 726 lbs. • Ratio: 103
 Adj YW: 1286 lbs. • SC: 37

S A V FINAL ANSWER 0035
TNT TUITION U238
 TNT MISS S68

NOBLES NO JOKE M203
BDV MISS WIBAUX P78
 BDV 811 OF HI TECH EXT

CE	BW	WW	YW	MCE	M	MW	CW	YG	MB	BF	REA	API	TI
6.6	1.1	63.4	98.5	4.8	23.7	55.4	30.2	-0.16	0.34	-0.025	0.57	106.0	68.4

This Tuition son seemed to always catch our eye, all summer long. His is a long strong made bull with a dam that is as big volumed and deep ribbed as you will find. The feeders should enjoy this bulls calves as they should perform well. Ratioed 103 at weaning.

Lot 92 **191A**

Homo Black • Polled • SimAngus 1/2 Blood Bull
 ASA# 2859544 • Tattoo: 191A • BD: 10/4/13
 Act. BW: 90 lbs. • Act. WW: 630 lbs. • Adj. WW: 691 lbs. • Ratio: 98
 Adj YW: 1251 lbs. • SC: 37.5

MYTTY IN FOCUS
BDV TORQUE 912W
 BDV R523 OF HARTTRAVELER

LRS PREFERRED STOCK 370C
BDV MS PREF STOCK 7T21
 BDV CASSAMDRA H86

CE	BW	WW	YW	MCE	M	MW	CW	YG	MB	BF	REA	API	TI
10.3	1.9	71.9	107.3	7.7	14.3	50.2	36.4	-0.11	0.25	-0.029	0.43	116.2	69.5

This bull is one of the younger Fall bulls. He is a eye catcher. If you like cattle that are deep sided and have spring of rib, you should like this bull. His sire Torque is a real beef bull so sound, deep sided, and sires that look that makes cattle have extra value. His dam is a long sided preferred stock cow that weans well.

Lot 94 **128A**

Homo Black • Polled • SimAngus 1/2 Blood Bull
 ASA# 2859420 • Tattoo: 128A • BD: 8/22/13
 Act. BW: 83 lbs. • Act. WW: 682 lbs. • Adj. WW: 636 lbs. • Ratio: 90
 Adj YW: 1196 lbs. • SC: 38.5

MYTTY IN FOCUS
BDV TORQUE 912W
 BDV R523 OF HARTTRAVELER

LRS PREFERRED STOCK 370C
BDV MS PREF STOCK 8U5
 BDV MISS NATALIE N6

CE	BW	WW	YW	MCE	M	MW	CW	YG	MB	BF	REA	API	TI
11.5	0.6	60.5	93.7	8.7	20.3	50.5	26.7	-0.16	0.28	-0.031	0.46	121.3	66.2

It just amazes me how even these Torque sons are. They look a like and make this pen of bulls tight in kind and quality. If you are looking to keep replacements get a hold of these Torque sons

SUGGESTED GUIDELINES FOR USING YEARLING BULLS

We are firm believers in the use of yearling bulls and feel it is one of the best years of their lives. It is a time when they are easy to manage and their only concern is breeding cows. We have found that yearling bulls that are managed carefully during the second year of their lives, not only do well, but they will perform better, over time. Below are some suggested guidelines for the care of yearling bulls.

Upon delivery to your ranch, keep yearling bulls separate from older bulls and feed them a maintenance ration of 5-8 pounds per head of grain and free choice hay. Reduce the amount of grain fed gradually, so that bulls are on straight hay or grass 2-4 weeks prior to the breeding season.

Where possible, try to limit the bulls to 45-60 days of pasture service the first year. At this time or as soon as possible, remove the bulls and put them in separate pastures with plenty of good quality grass.

It is best to feed yearling bulls separate from older bulls until after their second breeding season. This allows them to achieve the growth and strength to compete with older bulls for feed and space.

You will see the benefit of a little added cost and care of feeding a yearling bull by probably two or three more years of service from a well managed and healthy bull.



97

Lot 93 **142A**

Homo Black • Polled • SimAngus 1/2 Blood Bull
 ASA# 2859447 • Tattoo: 142A • BD: 8/31/13
 Act. BW: 87 lbs. • Act. WW: 672 lbs. • Adj. WW: 681 lbs. • Ratio: 97
 Adj YW: 1241 lbs. • SC: 40.5

MYTTY IN FOCUS
BDV TORQUE 912W
 BDV R523 OF HARTTRAVELER

SAS T101 SWEET MEAT
BDV MS SWEET MEAT 0X40
 BDV CONNIE R88

CE	BW	WW	YW	MCE	M	MW	CW	YG	MB	BF	REA	API	TI
9.5	1.8	65.1	95.9	7.9	20.1	52.7	29.5	-0.09	0.29	-0.014	0.41	115.1	67.0

Here is another Torque son with that big deep side and big sweeping rib. I feel this bull will sire those top producing easy keeping daughters that will be the envy of all that see them. His sons will make top performing feeder cattle.

Lot 95 **152A**

Homo Black • Homo Polled • SimAngus 3/4 Blood Bull
 ASA# 2859468 • Tattoo: 152A • BD: 9/5/13
 Act. BW: 83 lbs. • Act. WW: 760 lbs. • Adj. WW: 737 lbs. • Ratio: 105
 Adj YW: 1297 lbs. • SC: 40

LRS WCS MASTER DESIGN 58
BDV MASTERPIECE 36X
 BDV MISS CLASSIC R57

LRS PREFERRED STOCK 370C
BDV MISS JOLA P69
 812

CE	BW	WW	YW	MCE	M	MW	CW	YG	MB	BF	REA	API	TI
7.1	1.2	68.5	107.2	5.3	17.3	51.5	35.5	-0.23	0.17	-0.060	0.56	114.1	71.0

A Masterpiece that don't disappoint. He is a moderate sized bull with extra performance. His dam is a cow that year in year out calves early with a lighter birth weight. Yet her calves press the scale down at weaning. This bull will make great daughters and steers that pay the bills. Ratioed 105 at weaning.

Lot 96 **162A**

Homo Black • Polled • SimAngus 3/4 Blood Bull
 ASA# 2859500 • Tattoo: 162A • BD: 9/13/13
 Act. BW: 78 lbs. • Act. WW: 728 lbs. • Adj. WW: 703 lbs. • Ratio: 100
 Adj YW: 1263 lbs. • SC: 38

WCS MR TRADITION 732T
BDV NEW TRADITION 131X
 BDV GINGER 6S17

S A V 5175 BANDO 502
BDV MS BOX CAR 8U25
 PEARL N2

CE	BW	WW	YW	MCE	M	MW	CW	YG	MB	BF	REA	API	TI
10.1	-0.6	59.5	88.5	9.3	22.4	52.1	21.7	-0.15	0.28	-0.034	0.36	126.0	67.8

This is a real long geared bull that will add length and some frame to his calves. Use him on a smaller set of cows to stretch them out.

Lot 97 **154A**

Homo Black Blaze • Homo Polled • Purebred Simmental Bull
 ASA# 2859471 • Tattoo: 154A • BD: 9/6/13
 Act. BW: 90 lbs. • Act. WW: 728 lbs. • Adj. WW: 739 lbs. • Ratio: 105
 Adj YW: 1299 lbs. • SC: 39

LRS WCS MASTER DESIGN 58
BDV MASTERPIECE 36X
 BDV MISS CLASSIC R57

NLC FORTUNATE SON 100N
BDV MS FORTUNATE 8U10
 BDV VALENTINE H57

CE	BW	WW	YW	MCE	M	MW	CW	YG	MB	BF	REA	API	TI
4.1	4.3	78.7	115.9	6.3	11.0	50.4	44.7	-0.25	0.10	-0.075	0.61	112.0	70.1

What a way to start this pen of Purebred 18 month old bulls. This bull is out of a big deep-sided dam that is the disposition queen. These Masterpiece cattle always seem to be at the top when it comes to performance. His daughters are nice easy keepers with excellent udder quality. Ratioed 105 at weaning.

Lat
98

100A

Homo Black • Homo Polled • Purebred Simmental Bull
ASA# 2786352 • Tattoo: 100A • BD: 3/31/13
Act. BW: 88 lbs. • Act. WW: 552 lbs. • Adj. WW: 732 lbs. • Ratio: 98
Adj YW: lbs. • SC: 41

MJ MARATHON 6W
TRAXS SOLO Y39
MISS TRAX U839

X

SRS RIGHT-ON 22R
BTS HONEY 069X
THSR SHIRLEY S646

CE	BW	WW	YW	MCE	M	MW	CW	YG	MB	BF	REA	API	TI
8.8	2.7	65.2	101.6	9.3	23.0	55.6	34.6	-0.26	0.18	-0.067	0.60	117.1	68.6

We kept this bull over as a two year old. He is such an easy bull to be around, excellent tempered and easy going. He is thick topped, wide based and deep sided. Use him to sire moderate easy doing cattle that are easy to get along with.



98

Lat
99

159A

Homo Black • Homo Polled • Purebred Simmental Bull
ASA# 2859486 • Tattoo: 159A • BD: 9/10/13
Act. BW: 92 lbs. • Act. WW: 800 lbs. • Adj. WW: 819 lbs. • Ratio: 116
Adj YW: 1397 lbs. • SC: 38.5

MR NLC SUPERIOR S6018
TNT TANKER U263
TNT MISS S17

X

ELLINGSON BLACKPERFECTOR
BDV MS PERFECTOR 7T16
STF REBECA

CE	BW	WW	YW	MCE	M	MW	CW	YG	MB	BF	REA	API	TI
5.6	3.0	83.0	126.0	12.0	21.6	63.1	48.9	-0.32	0.09	-0.070	0.93	122.5	76.1

Here is one of the top performance bulls in this Fall pen. He weaned off over 819lbs to ratio 116. He ranked 4 out of 84 contemporaries. Use him to add payweight and sire the keeping kind.

Lat
100

120A

Homo Black • Homo Polled • Purebred Simmental Bull
ASA# 2859408 • Tattoo: 120A • BD: 8/14/13
Act. BW: 84 lbs. • Act. WW: 833 lbs. • Adj. WW: 787 lbs. • Ratio: 112
Adj YW: 1347 lbs. • SC: 41

WCS MR TRADITION 732T
BDV NEW TRADITION 131X
BDV GINGER 6S17

X

TNT KNOCK OUT R206
BDV MS KNOCK OUT 9W27
NLC J104 JAMICIA

CE	BW	WW	YW	MCE	M	MW	CW	YG	MB	BF	REA	API	TI
7.3	2.1	72.5	100.2	11.2	19.6	55.8	32.0	-0.20	0.01	-0.057	0.46	114.3	67.6

This is the oldest of the Fall bulls. He is a long bodied bull that offers excellent growth. His dam s a real neat cow that is one of my favorites. She is a great momma cow with loads of capacity. She also has a perfect udder and is a heavy milker. Ratioed 112 at weaning.

Lat
101

151A

Homo Black • Polled • Purebred Simmental Bull
ASA# 2859467 • Tattoo: 151A • BD: 9/7/13
Act. BW: 84 lbs. • Act. WW: 763 lbs. • Adj. WW: 776 lbs. • Ratio: 110
Adj YW: 1336 lbs. • SC: 37.5

WCS MR TRADITION 732T
BDV NEW TRADITION 131X
BDV GINGER 6S17

X

BDV CLICKER 27T
BDV MS CLICKER 9W35
BDV CONNIE 6S31

CE	BW	WW	YW	MCE	M	MW	CW	YG	MB	BF	REA	API	TI
9.4	1.6	70.6	102.6	11.6	14.9	50.2	33.0	-0.14	0.19	-0.033	0.46	117.9	71.5

Light at birth, heavy at weaning that is a great combination. This bull is thick and deep sided. His dam is loaded with muscle and possesses that easy keeping quality. Use him to sire calves that weigh up and make daughters that are the keeping kind, he ratioed 110 at weaning.

Lat
102

184A

Homo Black Blaze • Polled • Purebred Simmental Bull
ASA# 2859532 • Tattoo: 184A • BD: 9/24/13
Act. BW: 80 lbs. • Act. WW: 676 lbs. • Adj. WW: 754 lbs. • Ratio: 107
Adj YW: 1314 lbs. • SC: 38.5

MJ MARATHON 6W
TRAXS SOLO Y39
MISS TRAX U839

X

MR NLC SUPERIOR S6018
BDV MS SUPERIOR 9W14
BDV MOLLY L42

CE	BW	WW	YW	MCE	M	MW	CW	YG	MB	BF	REA	API	TI
9.6	1.4	71.1	115.3	11.3	25.6	61.1	40.8	-0.39	-0.05	-0.082	0.95	125.7	69.4

Looking for a baldy that has power and easy keeping quality. This bull could fill the order. He comes from a long line of top producers. I expect him to do the same. Ratioed 107 at 205 days.

Lat
103

185A

Homo Black • Polled • Purebred Simmental Bull
ASA# 2859533 • Tattoo: 185A • BD: 9/28/13
Act. BW: 88 lbs. • Act. WW: 684 lbs. • Adj. WW: 777 lbs. • Ratio: 110
Adj YW: 1337 lbs. • SC: 39.5

MJ MARATHON 6W
TRAXS SOLO Y39
MISS TRAX U839

X

CDI FULL FORCE 114P
BDV MS FULL FORCE 9W36
BDV MISS PATRICIA P71

CE	BW	WW	YW	MCE	M	MW	CW	YG	MB	BF	REA	API	TI
8.4	3.1	76.5	117.9	11.1	27.5	65.8	44.5	-0.29	0.12	-0.065	0.82	131.2	73.7

Here is an excellent performing Solo son. He will sire a little more frame and extra gas to produce calves with payweight. His cow family is a high octane bunch that produce well. He ratioed 110 at weaning.

Lat
104

170A

Homo Black • Polled • Purebred Simmental Bull
ASA# 2859509 • Tattoo: 170A • BD: 9/16/13
Act. BW: 91 lbs. • Act. WW: 674 lbs. • Adj. WW: 710 lbs. • Ratio: 101
Adj YW: 1270 lbs. • SC: 39

WCS MR TRADITION 732T
BDV NEW TRADITION 131X
BDV GINGER 6S17

X

SAS FULL BORE L531
BDV MISS MARY P88
NLC J60 JAMILLE

CE	BW	WW	YW	MCE	M	MW	CW	YG	MB	BF	REA	API	TI
7.6	2.1	57.5	79.7	12.2	24.3	53.0	20.2	-0.26	0.06	-0.045	0.59	116.1	60.7

Looking for a bull to put extra depth and volume in your cows. Here is the one to do it. This bull is absolutely a chunk. You will find his daughters to be the best.

Lot
105

161A

Homo Black • Homo Polled • Purebred Simmental Bull
ASA# 2859496 • Tattoo: 161A • BD: 9/12/13
Act. BW: 89 lbs. • Act. WW: 670 lbs. • Adj. WW: 691 lbs. • Ratio: 98
Adj YW: 1251 lbs. • SC: 38

WCS MR TRADITION 732T
BDV NEW TRADITION 131X
BDV GINGER 6S17

ELLINGSON BLACKPERFECTOR
BDV MS PERFECTOR 7T7
STF REBECA

CE	BW	WW	YW	MCE	M	MW	CW	YG	MB	BF	REA	API	TI
9.5	1.9	61.7	89.2	7.0	17.8	48.7	25.6	-0.21	0.26	-0.054	0.41	125.7	68.1

This bull is stout. He is long topped, deep ribbed and wide throughout. His dam is a no miss calf raising machine. Use him to sire calves that catch your attention and perform well. This one is a little higher strung, but still seems to be ok to handle.

Lot
106

190A

Homo Black • Homo Polled • Purebred Simmental Bull
ASA# 2859543 • Tattoo: 190A • BD: 10/3/13
Act. BW: 94 lbs. • Act. WW: 720 lbs. • Adj. WW: 805 lbs. • Ratio: 114
Adj YW: 1365 lbs. • SC: 41.5

MJ MARATHON 6W
TRAXS SOLO Y39
MISS TRAX U839

KAPPES VORTEC S507
BDV MS VORTEC 8U23
BDV MISS JULIE R103

CE	BW	WW	YW	MCE	M	MW	CW	YG	MB	BF	REA	API	TI
7.0	4.0	76.9	119.1	8.9	27.4	65.9	46.6	-0.25	0.06	-0.068	0.71	110.4	71.0

This is one of the younger fall bulls, but he doesn't take a back seat. This bull is out of a heavy milking, good looking cow that is a maternal sister to last years high selling bull. Use him on a set of Angus or baldy cows and reap the benefits. He ratioed 114 at weaning.

Lot
107

166A

Homo Black • Polled • Purebred Simmental Bull
ASA# 2859507 • Tattoo: 166A • BD: 9/15/13
Act. BW: 92 lbs. • Act. WW: 704 lbs. • Adj. WW: 755 lbs. • Ratio: 107
Adj YW: 1315 lbs. • SC: 40

MJ MARATHON 6W
TRAXS SOLO Y39
MISS TRAX U839

TRIPLE C INVASION R47K
BDV MS INVASION 9W30
BDV MS FULL FORCE 7T37

CE	BW	WW	YW	MCE	M	MW	CW	YG	MB	BF	REA	API	TI
8.5	3.5	71.5	110.9	11.9	27.1	62.8	41.1	-0.31	0.12	-0.068	0.81	130.8	70.4

This Solo son is a truck. He is big topped, wide based, big butted and gentle. I feel you can use him on a wide variety of cows and always have cattle that have muscle. If disposition is high on your list this bull is king. Ratioed 107 at weaning.

Lot
108

163A

Homo Black • Homo Polled • SimAngus 1/2 Blood Bull
ASA# 2859503 • Tattoo: 163A • BD: 9/15/13
Act. BW: 83 lbs. • Act. WW: 668 lbs. • Adj. WW: 743 lbs. • Ratio: 105
Adj YW: 1303 lbs. • SC: 39.5

J U COAL BANK 84U
MRA COAL BANK 1243
MRA RUBY 9250

TNT EXCALIBER U310
BDV MS EXCALIBER 1Y16
BDV MS PERFECTOR 7T16

CE	BW	WW	YW	MCE	M	MW	CW	YG	MB	BF	REA	API	TI
9.1	1.6	70.3	110.7	5.0	24.8	60.0	38.3	-0.13	0.39	-0.016	0.65	116.7	73.8

This Coal Bank son leads off a moderate thick made set of bulls. We think this guy offers a modest yet powerful set of genes. Look for him to sire calves that work in all areas of the industry. Nice calving ease, great performance and carcass quality. Ratioed 105 at weaning out of a two year old heifer.

Lot
109

183A

Homo Black • Polled • SimAngus 3/4 Blood Bull
ASA# 2859528 • Tattoo: 183A • BD: 9/23/13
Act. BW: 87 lbs. • Act. WW: 716 lbs. • Adj. WW: 765 lbs. • Ratio: 109
Adj YW: 1325 lbs. • SC: 39

MJ MARATHON 6W
TRAXS SOLO Y39
MISS TRAX U839

CDI FULL FORCE 114P
BDV MS FULL FORCE 9W41
BDV M216 OF BANDO 1575

CE	BW	WW	YW	MCE	M	MW	CW	YG	MB	BF	REA	API	TI
9.0	2.7	73.2	117.8	10.9	31.4	68.0	44.1	-0.23	0.25	-0.052	0.74	125.5	76.2

This bull is out of a very good cow. She is so powerful. Deep bodied and just plain good. This bull patterns himself after Lot 107. Take these heavy muscled bulls home and produce easy fleshing cattle with milk and performance. He ratioed 109 at weaning.

Lot
110

123A

Black • Polled • SimAngus 1/2 Blood Bull
ASA# 2859413 • Tattoo: 123A • BD: 8/19/13
Act. BW: 81 lbs. • Act. WW: 690 lbs. • Adj. WW: 696 lbs. • Ratio: 99
Adj YW: 1256 lbs. • SC: 37.5

S A V FINAL ANSWER 0035
COLEMAN REGIS 904
COLEMAN DONNA 714

TNT EXCALIBER U310
BDV MS EXCALIBER 1Y36
BDV PARKER 6S44

CE	BW	WW	YW	MCE	M	MW	CW	YG	MB	BF	REA	API	TI
13.6	-0.1	67.3	103.2	10.6	25.2	58.8	31.1	-0.19	0.32	0.005	0.89	135.9	73.2

This Regis son brings calving ease with positive growth and materials to the equation. The Regis cattle are very strong maternally and seem to have very good fleshing ability. This bull will work well on younger smaller cows that need a little more calving ease.

Lot
111

150A

Homo Black • Homo Polled • SimAngus 1/2 Blood Bull
ASA# 2859466 • Tattoo: 150A • BD: 9/2/13
Act. BW: 85 lbs. • Act. WW: 750 lbs. • Adj. WW: 723 lbs. • Ratio: 103
Adj YW: 1283 lbs. • SC: 41

MJ MARATHON 6W
TRAXS SOLO Y39
MISS TRAX U839

S A V 8180 TRAVELER 004
BDV T743 OF TRAVELER 004
ANCHOR EVERGREEN BMB 624

CE	BW	WW	YW	MCE	M	MW	CW	YG	MB	BF	REA	API	TI
9.2	1.4	64.9	107.5	7.7	26.0	58.5	36.4	-0.12	0.24	-0.025	0.49	111.4	67.5

This bull is out of one of our most powerful Angus cows. This is her first SimAngus bull. Her Angus sired sons have always topped our Angus sale, Lassie Simmentals own a son that is siring some of his top SimAngus cattle. In fact he said that he sorted off a group of cows for him before AI, he is the only herd sire he did that with. This bull is moderate framed, has plenty of muscle and will sire top notch females. He ratioed 103 at weaning.

Lot
112

134A

Homo Black • Homo Polled • SimAngus 1/2 Blood Bull
ASA# 2859432 • Tattoo: 134A • BD: 8/26/13
Act. BW: 84 lbs. • Act. WW: 730 lbs. • Adj. WW: 702 lbs. • Ratio: 100
Adj YW: 1262 lbs. • SC: 39

MYTTY IN FOCUS
BDV TORQUE 912W
BDV R523 OF HARTTRAVELER

BDV CLICKER 27T
BDV MS CLICKER 9W17
BDV PARKER 6S44

CE	BW	WW	YW	MCE	M	MW	CW	YG	MB	BF	REA	API	TI
13.3	0.0	61.3	94.5	11.4	19.4	50.0	26.3	-0.13	0.31	-0.017	0.48	133.1	68.2

This bull is a neat package. He is thick and classy. His dam is a real neat well made cow with plenty of milk. This bull should sire them with plenty of look and muscle. His daughters will be keepers. With Torque in his pedigree you know they will be good.

113 **171A**

Homo Black • Polled • Purebred Simmental Bull
 ASA# 2859510 • Tattoo: 171A • BD: 9/12/13
 Act. BW: 88 lbs. • Act. WW: 760 lbs. • Adj. WW: 783 lbs. • Ratio: 111
 Adj YW: 1343 lbs. • SC: 38

WCS MR TRADITION 732T
BDV NEW TRADITION 131X
 BDV GINGER 6S17

BDV ACCELERATOR 62N
BDV JADA 6S28
 BDV MISS HILLARY P73

CE	BW	WW	YW	MCE	M	MW	CW	YG	MB	BF	REA	API	TI
7.4	2.1	67.7	94.7	9.9	17.9	51.8	28.9	-0.21	0.12	-0.042	0.55	123.9	67.4

Here is a long made bull that ratioed 111 at weaning. This bull will work very well on Angus and Baldy cattle. He will add extra pay weight to his calves, his daughters should make great cows.

114 **173A**

Black • Polled • SimAngus 1/2 Blood Bull
 ASA# N/A • Tattoo: 173A • BD: 9/16/13
 Act. BW: 85 lbs. • Act. WW: 720 lbs. • Adj. WW: 750 lbs.
 Adj YW: 1310 lbs. • SC: 37.5

WCS MR TRADITION 732T
BDV NEW TRADITION 131X
 BDV GINGER 6S17

940 RED ANGUS

CE	BW	WW	YW	MCE	M	MW	CW	YG	MB	BF	REA	API	TI

This bull is out of a red Angus cow that consistently raises a great calf. He is long nice made, and easy to be around. If you like deep sided cattle that are moderate framed with maternal and calving ease, look this bull up. This bull sells as commercial, no papers or EPDs available.

115 **199A**

Homo Black • Polled • Purebred Simmental Bull
 ASA# 2859555 • Tattoo: 199A • BD: 10/25/13
 Act. BW: 88 lbs. • Act. WW: 600 lbs. • Adj. WW: 757 lbs. • Ratio: 107
 Adj YW: 1317 lbs. • SC: 39.5

MJ MARATHON 6W
TRAXS SOLO Y39
 MISS TRAX U839

SV NORTHWEST FIGURE
BDV MS FIGURE 8U2
 BDV AMY 6S21

CE	BW	WW	YW	MCE	M	MW	CW	YG	MB	BF	REA	API	TI
9.1	3.7	76.9	117.8	11.3	26.6	65.0	45.4	-0.29	0.09	-0.071	0.78	130.7	72.4

This bull is the second youngest fall born in the offering. He is a performance bull with plenty of gas in the tank. His dam is a hard working cow that consistently produces pounds. This bull ratioed 107 in his contemporary group. Cow power is at its finest here. Keep the heifers and sell the feeder cattle that weigh heavy.

116 **148A**

Homo Black • Polled • SimAngus 1/4 Blood Bull
 ASA# 2859458 • Tattoo: 148A • BD: 9/3/13
 Act. BW: 79 lbs. • Act. WW: 768 lbs. • Adj. WW: 812 lbs. • Ratio: 115
 Adj YW: 1372 lbs. • SC: 39

J U COAL BANK 84U
MRA COAL BANK 1243
 MRA RUBY 9250

TNT DUAL FOCUS T249
BDV MS DUAL FOCUS Y13
 BDV MS FULL FORCE 9W50

CE	BW	WW	YW	MCE	M	MW	CW	YG	MB	BF	REA	API	TI
12.7	0.4	72.5	116.0	8.0	25.5	61.8	39.6	-0.01	0.54	0.010	0.47	136.4	79.7

If you are looking for a 1/4 blood here is a good one, his performance is excellent. He boasts an 812 weaning record to index 115. Putting him in the top eight at weaning. He did this with a light 79lb birth weight. His two-year-old dam has a bright future here.

117 **136A**

Homo Black • Homo Polled • SimAngus 1/2 Blood Bull
 ASA# 2859435 • Tattoo: 136A • BD: 8/28/13
 Act. BW: 81 lbs. • Act. WW: 580 lbs. • Adj. WW: 614 lbs. • Ratio: 87
 Adj YW: 1174 lbs. • SC: 37

S A V FINAL ANSWER 0035
TNT TUITION U238
 TNT MISS S68

BDV FESTUS 149S
BDV MS FESTUS 1Y5
 BDV MISS JOLA P69

CE	BW	WW	YW	MCE	M	MW	CW	YG	MB	BF	REA	API	TI
9.5	0.6	59.7	93.7	4.9	20.0	49.8	26.8	-0.16	0.49	-0.019	0.56	121.9	70.8

This bull is out of a two-year-old dam that did a nice job for her first calf. She has a big strapping calf on her now. This Tuition calf is thick and deep sided. He will add muscle and stoutness to his calves. Calving ease should be real good.

118 **177A**

Homo Black • Polled • SimAngus 1/2 Blood Bull
 ASA# 2859517 • Tattoo: 177A • BD: 9/15/13
 Act. BW: 83 lbs. • Act. WW: 640 lbs. • Adj. WW: 685 lbs. • Ratio: 97
 Adj YW: 1145 lbs. • SC: 38

S A V NET WORTH 4200
BDV ASSET 122X
 BDV MISS DARLENE P77

PVF-J 4P14 HYB ROOKIE
BDV MS ROOKIE 0X10
 BDV MISS JOLA P69

CE	BW	WW	YW	MCE	M	MW	CW	YG	MB	BF	REA	API	TI
10.4	0.7	61.5	96.9	10.4	29.1	59.9	28.8	-0.22	0.34	-0.037	0.64	124.5	69.3

This bull should add a little more frame and style. He is out of a flashy made Rookie daughter. Use him to add some length and give you that look to draw attention to his calves. There should be plenty of growth here.

119 **172A**

Homo Black • Polled • Purebred Simmental Bull
 ASA# 2859511 • Tattoo: 172A • BD: 9/12/13
 Act. BW: 87 lbs. • Act. WW: 640 lbs. • Adj. WW: 646 lbs. • Ratio: 92
 Adj YW: 1206 lbs. • SC: 38

MJ MARATHON 6W
TRAXS SOLO Y39
 MISS TRAX U839

BDV REBAR 7R
BDV MS REBAR 7T46
 BDV MISS JULIE N155

CE	BW	WW	YW	MCE	M	MW	CW	YG	MB	BF	REA	API	TI
8.4	2.2	65.0	102.3	6.8	26.5	59.0	34.3	-0.33	0.03	-0.067	0.81	106.9	65.9

This bull is out of a high producing cow. His dam got injured and had to be sold in January, so this bull was on his own the last two months, making his weaning weight lower than it should have been. This bull should add maternal and stoutness to his calves use him to add payweight and maternal strength.

120 **195A**

Homo Black • Polled • SimAngus 1/2 Blood Bull
 ASA# 2859548 • Tattoo: 195A • BD: 10/6/13
 Act. BW: 83 lbs. • Act. WW: 576 lbs. • Adj. WW: 677 lbs. • Ratio: 96
 Adj YW: 1237 lbs. • SC: 39.5

MYTTY IN FOCUS
BDV TORQUE 912W
 BDV R523 OF HARTTRAVELER

MR NLC SUPERIOR S6018
BDV MS SUPERIOR 0X23
 BDV PARKER R90

CE	BW	WW	YW	MCE	M	MW	CW	YG	MB	BF	REA	API	TI
10.9	1.0	64.9	99.5	9.2	16.3	48.7	30.7	-0.19	0.24	-0.029	0.62	119.6	67.2

Here is a Torque son that mirrors his 1/2 brothers. He is deep sided and thick made. Cow power runs in his veins. He is younger than most of his herd mates.

Lot 121 138A

Homo Black • Homo Polled • SimAngus 3/4 Blood Bull
 ASA# 2859438 • Tattoo: 138A • BD: 8/28/13
 Act. BW: 85 lbs. • Act. WW: 602 lbs. • Adj. WW: 643 lbs. • Ratio: 91
 Adj YW: 1203 lbs. • SC: 38

MR NLC UPGRADE U8676
MCM TOP GRADE 018X
 MCM 513R

BDV FESTUS 149S
BDV MS FESTUS 1Y38
 BDV VALENTINE H57

CE	BW	WW	YW	MCE	M	MW	CW	YG	MB	BF	REA	API	TI
8.5	1.7	57.7	90.5	9.9	29.1	58.0	26.7	-0.29	0.39	-0.052	0.70	123.5	68.1

This bull is an outcross to many of his herd mates. He is bred for carcass, calving ease, and maternal. He should sire cattle that are easy keeping and moderate sized. His daughters will be good uddered and wet.

Lot 122 174A

Homo Black • Homo Polled • SimAngus 1/2 Blood Bull
 ASA# 2859514 • Tattoo: 174A • BD: 9/16/13
 Act. BW: 94 lbs. • Act. WW: 570 lbs. • Adj. WW: 575 lbs. • Ratio: 82
 Adj YW: 1135 lbs. • SC: 40

MJ MARATHON 6W
TRAXS SOLO Y39
 MISS TRAX U839

B C C BUSHWACKER 41-93
BDV S642 OF BUSHWACKER
 B D V M206 OF WESTWIND LITE

CE	BW	WW	YW	MCE	M	MW	CW	YG	MB	BF	REA	API	TI
8.1	2.2	56.9	91.0	7.8	23.7	52.1	27.8	-0.20	0.21	-0.037	0.57	103.0	60.4

A thick moderate framed Solo son that is out of a good Bushwacker cow. This bull will keep frame size in line and yet he should sire capacity and depth in his calves. Udder quality should be very good.

Lot 123 182A

Homo Black • Polled • SimAngus 3/4 Blood Bull
 ASA# 2859527 • Tattoo: 182A • BD: 9/22/13
 Act. BW: 83 lbs. • Act. WW: 602 lbs. • Adj. WW: 666 lbs. • Ratio: 94
 Adj YW: 1325 lbs. • SC: 37

WCS MR TRADITION 732T
BDV NEW TRADITION 131X
 BDV GINGER 6S17

THSR FORESIGHT U801
BDV MS FORESIGHT 0X56
 BDV ROBIN 6S26

CE	BW	WW	YW	MCE	M	MW	CW	YG	MB	BF	REA	API	TI
8.5	1.2	57.8	83.9	8.8	17.3	46.2	21.7	-0.18	0.23	-0.033	0.45	114.2	62.5

Here is a thick soggy Tradition son. Use him to keep your cattle sensible sized, deep bodied and efficient

Lot 124 158A

Homo Black • Polled/Scurred • SimAngus 1/2 Blood Bull
 ASA# 2859482 • Tattoo: 158A • BD: 9/10/13
 Act. BW: 88 lbs. • Act. WW: 704 lbs. • Adj. WW: 692 lbs. • Ratio: 98
 Adj YW: 1252 lbs. • SC: 36

S A V NET WORTH 4200
BDV ASSET 122X
 BDV MISS DARLENE P77

S A V FOUR SEASONS 5231
BDV MS 4-SEASONS 7T33
 BDV MARIA R92

CE	BW	WW	YW	MCE	M	MW	CW	YG	MB	BF	REA	API	TI
9.9	2.2	64.1	96.7	8.1	28.2	60.3	30.7	-0.11	0.34	-0.006	0.54	117.2	68.0

Here is a big strong bull that will sire extra length an style. He is out of a full bodied cow that is rock solid. You won't go wrong with this bull if you are wanting to add some frame and body length. This bull should add disposition and udder quality.

Lot 125 165A

Homo Black • Polled/Scurred • SimAngus 1/2 Blood Bull
 ASA# 2859506 • Tattoo: 165A • BD: 9/15/13
 Act. BW: 87 lbs. • Act. WW: 700 lbs. • Adj. WW: 714 lbs. • Ratio: 101
 Adj YW: 1274 lbs. • SC: 41

MYTTY IN FOCUS
BDV TORQUE 912W
 BDV R523 OF HARTTRAVELER

SAS FULL BORE L531
BDV MISS DARLENE P77
 NLC F75 FONA

CE	BW	WW	YW	MCE	M	MW	CW	YG	MB	BF	REA	API	TI
12.7	0.1	61.2	85.7	12.0	25.4	56.0	20.8	-0.20	0.16	-0.037	0.48	124.8	64.6

Here is another bull that patterns himself after Lot 124. This bull is long and should add quality to his calves. He weaned heavy and indexed 101 at weaning. This guy is fancy but I would like to slow him down some. He would better serve a larger type Ranch.

Lot 126 149A

Homo Black • Polled • SimAngus 1/2 Blood Bull
 ASA# 2859460 • Tattoo: 149A • BD: 9/3/13
 Act. BW: 89 lbs. • Act. WW: 712 lbs. • Adj. WW: 728 lbs. • Ratio: 103
 Adj YW: 1288 lbs. • SC: 35

S A V NET WORTH 4200
BDV ASSET 122X
 BDV MISS DARLENE P77

PVF-J 4P14 HYB ROOKIE
BDV MS ROOKIE 0X47
 BDV MS BOX CAR 8U19

CE	BW	WW	YW	MCE	M	MW	CW	YG	MB	BF	REA	API	TI
9.3	2.3	64.7	102.4	11.2	32.2	64.6	34.5	-0.19	0.35	-0.034	0.62	121.3	69.8

This bull will add some style and frame. Use him to add style, some frame and a smooth look. He should work well on British cows that need some extra length or size.

Lot 127 145A

Homo Black • Polled • SimAngus 1/2 Blood Bull
 ASA# 2859450 • Tattoo: 145A • BD: 9/1/13
 Act. BW: 75 lbs. • Act. WW: 567 lbs. • Adj. WW: 611 lbs. • Ratio: 87
 Adj YW: 1171 lbs. • SC: 40.5

J U COAL BANK 84U
MRA COAL BANK 1243
 MRA RUBY 9250

MR NLC SUPERIOR S6018
BDV MS SUPERIOR 1Y30
 BDV MS REBAR 7T27

CE	BW	WW	YW	MCE	M	MW	CW	YG	MB	BF	REA	API	TI
10.1	-0.5	50.6	81.3	8.3	26.6	51.9	18.1	-0.26	0.22	-0.022	0.76	113.8	61.4

This bull is moderate framed, but very strong topped and long bodied. He will sire fancy calves that stay sensibly sized.

Lot 128 200A

Homo Black • Polled • SimAngus 1/2 Blood Bull
 ASA# 2859557 • Tattoo: 200A • BD: 10/31/13
 Act. BW: 87 lbs. • Act. WW: 560 lbs. • Adj. WW: 728 lbs. • Ratio: 103
 Adj YW: 1288 lbs. • SC: 35

S A V NET WORTH 4200
BDV ASSET 122X
 BDV MISS DARLENE P77

BDV FESTUS 149S
BDV MS 9W16 OF 149S
 BDV MS 4-SEASONS 7T31

CE	BW	WW	YW	MCE	M	MW	CW	YG	MB	BF	REA	API	TI
9.9	2.1	67.4	99.4	9.8	32.2	65.9	31.9	-0.11	0.35	-0.017	0.50	122.1	71.0

This is the youngest of the Fall bulls. He is out of one of our stoutest big bodied cows. His dam turned right around with her calving date and was one of the first to calve this fall in August, young in age but a good doing bull. He comes strongly recommended if you like fleshing ability and cows that stay in condition. He should sire top-notch replacements that have top quality udders.

Lot 129 146A

Homo Black Blaze • Polled • SimAngus 1/2 Blood Bull
 ASA# 2859454 • Tattoo: 146A • BD: 9/2/13
 Act. BW: 87 lbs. • Act. WW: 672 lbs. • Adj. WW: 664 lbs. • Ratio: 94
 Adj YW: 1224 lbs. • SC: 41

MYTTY IN FOCUS
BDV TORQUE 912W
 BDV R523 OF HARTTRAVELER

NLC FORTUNATE SON 100N
BDV MS FORTUNATE 9W15
 BDV MS REBAR 7T27

CE	BW	WW	YW	MCE	M	MW	CW	YG	MB	BF	REA	API	TI
10.3	1.1	58.6	87.8	8.2	18.8	48.1	23.9	-0.15	0.29	-0.023	0.47	116.7	64.2

I really like this bull he is very attractive with a big strong top and that easy keeping, thick-bodied look Torque puts on his calves. His dam is a moderate heavy milking cow that has a great udder.

Angus Bulls

Lot 131 342A

Black • Homo Polled • Purebred Angus Bull
 ASA# 2859398 • Tattoo: 342A • BD: 8/22/13
 Act. BW: 81 lbs. • Act. WW: 727 lbs. • Adj. WW: 720 lbs. • Ratio: 109
 Adj YW: 1287 lbs. • SC: 38

RITO 707 OF IDEAL 3407 7075
S A V RESOURCE 1441
 S A V BLACKCAP MAY 4136

S A V FOUR SEASONS 5231
BDV T741 OF FOUR SEASONS
 N F C LASS 9592

Spring 2015 ASA EPDs

CE	BW	WW	YW	MCE	M	MW	CW	YG	MB	BF	REA	API	TI
10.3	-0.2	69.9	112.9	3.1	28.5	63.4	37.0	0.11	0.36	0.042	0.33	94.5	64.5

This bull is a true high performance meat machine. Dan Vanek commented on this bull saying "We will clip over 3600 Angus bulls this spring, and this one will be in the top 20". I have mixed emotions on whether I should have kept him to use on our own program. He is Schaff bred for two generations representing two of their most powerful cow families. If you are looking for top Angus genetics this one should be on your list.

Lot 132 340A

Black • Homo Polled • Purebred Angus Bull
 Tattoo: 340A • BD: 8/12/13
 Act. BW: 78 lbs. • Act. WW: 675 lbs. • Adj. WW: 687 lbs. • Ratio: 101
 Adj YW: 1235 lbs. • SC: 40

D H D TRAVELER 6807
BDV N328 OF 6807
 BDV 615 OF EXCITEMENT

Spring 2015 ASA EPDs

CE	BW	WW	YW	MCE	M	MW	CW	YG	MB	BF	REA	API	TI

This bull is a powerful Angus out of one of our good 6807 daughters. Cow power and strength is at its best with this guy. I had a couple Angus bulls get in with his dam and breed her. I think his sire is a big stout VRD son we raised but am not sure. So we will offer him as commercial no papers available. Sells as commercial, no papers or EPDs available.

Lot 134 345A

Black • Homo Polled • Purebred Angus Bull
 ASA# 2859405 • Tattoo: 345A • BD: 10/16/13
 Act. BW: 83 lbs. • Act. WW: 756 lbs. • Adj. WW: 758 lbs. • Ratio: 113
 Adj YW: 1275 lbs. • SC: 40

MYTTY IN FOCUS
BDV TORQUE 912W
 BDV R523 OF HARTTRAVELER

H A R B DENALI 788 J H
BDV X031 OF DENALI
 BDV T744 OF FOUR SEASONS

Spring 2015 ASA EPDs

CE	BW	WW	YW	MCE	M	MW	CW	YG	MB	BF	REA	API	TI
14.3	0.1	69.1	105.5	8.7	25.6	60.1	32.8	0.06	0.56	0.017	0.24	123.0	68.8

This bull mirrors his sire Torque in his body style. This bull is a brother to Lot 133 out of a good young cow that is proving to be a well-made cow with calving ease and maternal qualities. This bull was born with a full tail, but lost it as a young calf. I don't know if a cow stepped on it or a coyote had lunch. But today he is short tailed.

Lot 130 122A

Homo Black • Polled • SimAngus 1/2 Blood Bull
 ASA# 2859411 • Tattoo: 122A • BD: 8/14/13
 Act. BW: 84 lbs. • Act. WW: 590 lbs. • Adj. WW: 589 lbs. • Ratio: 84
 Adj YW: 1147 lbs. • SC: 37.5

S A V FINAL ANSWER 0035
TNT TUITION U238
 TNT MISS S68

B D V SOLUTION 603S
BDV MS SOLUTION 1Y45
 BDV MISS ANITA P28

CE	BW	WW	YW	MCE	M	MW	CW	YG	MB	BF	REA	API	TI
9.7	0.9	57.1	92.8	6.2	16.2	44.8	26.9	-0.14	0.53	-0.010	0.56	124.9	69.7

A long made Tuition out of a young two-year-old dam. He has the genetics to sire cattle that grow. He should sire real good daughters.



Lot 131 344A

Black • Homo Polled • Purebred Angus Bull
 ASA# 2859404 • Tattoo: 344A • BD: 10/6/13
 Act. BW: 80 lbs. • Act. WW: 663 lbs. • Adj. WW: 667 lbs. • Ratio: 99
 Adj YW: 1223 lbs. • SC: 39

MYTTY IN FOCUS
BDV TORQUE 912W
 BDV R523 OF HARTTRAVELER

BDV 808U OF THUNDER
BDV X036 OF 808U THUNDER
 BDV U832 OF BOX CAR

Spring 2015 ASA EPDs

CE	BW	WW	YW	MCE	M	MW	CW	YG	MB	BF	REA	API	TI
13.9	-0.6	52.5	88.2	8.0	21.7	48.0	22.2	0.01	0.52	0.013	0.21	115.3	59.0

This Torque son is out of a nice Thunder daughter. He should sire calving ease and sire daughters that make good cows. There is some excellent cows in his make up. His producing ability will be good.

TESTICLE MEASUREMENTS

The scrotal circumference of each bull was tape-measured on December 15, 2014. The scrotal measurements were adjusted to yearling, and sometimes will vary one way or another as actual yearlings. We guarantee our bulls 100% for fertility, unless damage is induced at your ranch, and then it's out of our control.

Recommendations for Scrotal Circumference:

Months of Age	12-14	15-20	21-30	30 +
Scrotal cm	35	37	39	Excellent
	30-35	31-37	32-39	Good
	30	31	32	Poor



135

Lot
135

414B

Black • Homo Polled • Purebred Angus Bull
ASA# 2912971 • Tattoo: 414B • BD: 2/24/14
Act. BW: 95 lbs. • Act. WW: 731 lbs. • Adj. WW: 739 lbs. • Ratio: 108
Adj YW: 1443 lbs. • ADG: 4.45 lbs. • SC: 35.5

NICHOLS EXTRA K205
VERMILION X FACTOR
VERMILION LADY 2888

COLEMAN MIDLAND 554
BDV U826 OF MIDLAND 554
B D V R514 OF HART TRAVELER

Spring 2015 ASA EPDs

CE	BW	WW	YW	MCE	M	MW	CW	YG	MB	BF	REA	API	TI
6.1	1.8	69.1	112.3	7.8	16.1	50.7	39.7	-0.16	0.51	-0.028	0.66	94.3	64.8

This X-Factor son is a power bull; he is loaded with muscle and performance. He will compete with the best of them anywhere. His dam is an outstanding moderate framed calf raising machine. No doubt this bull will sire calves that weigh up on payday. His daughters will be top performing cows that know how to raise a calf. Udder quality should be excellent.



136

Lot
136

404B

Black • Homo Polled • Purebred Angus Bull
ASA# 2912956 • Tattoo: 404B • BD: 2/6/14
Act. BW: 85 lbs. • Act. WW: 728 lbs. • Adj. WW: 720 lbs. • Ratio: 108
Adj YW: 1403 lbs. • ADG: 4.22 lbs. • SC: 36.5

APEX WINDY 078
APEX HIGH POINT 162
APEXETTE ROSE 8021

B D V SOLUTION 603S
BDV Y116 OF SOLUTION
B D V J914 OF HI TECH EXT

Spring 2015 ASA EPDs

CE	BW	WW	YW	MCE	M	MW	CW	YG	MB	BF	REA	API	TI
4.7	0.7	69.0	109.9	2.4	28.0	62.5	36.5	0.08	0.39	0.009	0.16	78.1	62.6

This bull certainly has the genetic make-up to sire cattle that perform. His sire was the high selling bull out of the APEX program. A son of the great Windy 078. Use this bull to add pay-weight and to sire top notch replacement females. Udder quality will be the best.



137

Lot
137

402B

Black • Homo Polled • Purebred Angus Bull
ASA# 2912954 • Tattoo: 402B • BD: 2/1/14
Act. BW: 78 lbs. • Act. WW: 760 lbs. • Adj. WW: 742 lbs. • Ratio: 113
Adj YW: 1331 lbs. • ADG: 3.57 lbs. • SC: 36

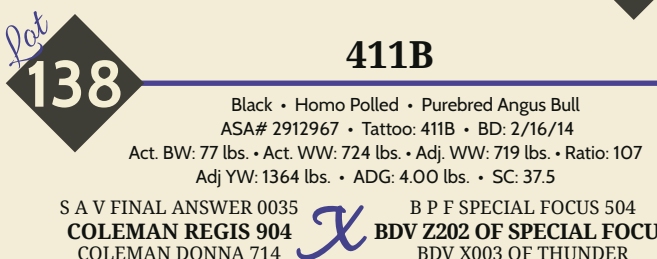
S A V FINAL ANSWER 0035
CONNEALY CAPITALIST 028
PRIDES PITAOFCONANGA8821

B P F SPECIAL FOCUS 504
BDV Z206 OF SPECIAL FOCUS
BDV X006 OF THUNDER

Spring 2015 ASA EPDs

CE	BW	WW	YW	MCE	M	MW	CW	YG	MB	BF	REA	API	TI
18.8	-2.7	77.1	129.8	12.1	21.7	60.2	43.4	0.11	0.80	0.046	0.43	160.6	83.9

ABSOLUTELY A STUD. This bull is the real deal, he offers the best in Angus genetics. He qualifies as a heifer bull and yet he is a top performing bull definitely good enough to qualify to be considerably the best of seedstock producers and the most discriminating cattlemen. You won't find a calving ease bull with this kind of performance and muscle shape very often. This guy has a big top, deep capacious rib shape and butt end second to none. His two-year-old dam is a very neat uddered cow that worked her heart out.



138

Lot
138

411B

Black • Homo Polled • Purebred Angus Bull
ASA# 2912967 • Tattoo: 411B • BD: 2/16/14
Act. BW: 77 lbs. • Act. WW: 724 lbs. • Adj. WW: 719 lbs. • Ratio: 107
Adj YW: 1364 lbs. • ADG: 4.00 lbs. • SC: 37.5

S A V FINAL ANSWER 0035
COLEMAN REGIS 904
COLEMAN DONNA 714

B P F SPECIAL FOCUS 504
BDV Z202 OF SPECIAL FOCUS
BDV X003 OF THUNDER

Spring 2015 ASA EPDs

CE	BW	WW	YW	MCE	M	MW	CW	YG	MB	BF	REA	API	TI
21.2	-3.2	71.8	115.8	12.6	26.2	62.1	34.1	0.03	0.64	0.056	0.64	158.3	77.7

This bull is a rock solid heifer bull blending some of the breeds top calving ease genetics together. Coleman Regis is an outstanding calving ease sire with top maternal genetics. He goes back to Final Answer, then comes Special Focus a true calving ease sire that produces top daughters he goes back to Mytty in Focus. Then we have Connealy Thunder a great calving ease specialist. Not only does this guy have a top calving ease pedigree he performed very well besides.

24

Lot
139

416B

Black • Homo Polled • Purebred Angus Bull
ASA# 2912977 • Tattoo: 416B • BD: 3/8/14
Act. BW: 84 lbs. • Act. WW: 747 lbs. • Adj. WW: 762 lbs. • Ratio: 111
Adj YW: 1323 lbs. • ADG: 3.60 lbs. • SC: 37

S A V FINAL ANSWER 0035
CONNEALY CAPITALIST 028
PRIDES PITAOFCONANGA8821

S A V 5175 BANDO 502
BDV X021 OF BOX CAR
B D V R503 OF STOCKMAN 365

Spring 2015 ASA EPDs

CE	BW	WW	YW	MCE	M	MW	CW	YG	MB	BF	REA	API	TI
14.7	-1.5	65.4	107.8	9.8	24.4	57.1	32.2	0.02	0.69	0.015	0.32	134.4	72.3

This Connealy Capitalist is a power bull with nice modest birth weight of 85lbs. Yet he has explosive performance. He takes no back seat in this powerful set of Angus bulls. His cow family is top shelf. He is out of a top performing Schaff sired dam and going back to one of our favorite Stockman daughters and on back to a great Hinnman cow that we started our Angus program with.

Lot 140 418B

Black • Homo Polled • Purebred Angus Bull
 ASA# 2912982 • Tattoo: 418B • BD: 3/22/14
 Act. BW: 83 lbs. • Act. WW: 653 lbs. • Adj. WW: 681 lbs. • Ratio: 97
 Adj YW: 1247 lbs. • ADG: 3.71 lbs. • SC: 35

APEX WINDY 078
APEX HIGH POINT 162
 APEXETTE ROSE 8021

S A V FOUR SEASONS 5231
BDV W912 OF 4-SEASONS
 M205 OF DATELINE 8661

Spring 2015 ASA EPDs

CE	BW	WW	YW	MCE	M	MW	CW	YG	MB	BF	REA	API	TI
8.2	-0.9	60.6	97.9	3.1	31.6	61.9	27.2	0.05	0.39	0.030	0.28	89.1	60.7

This bull is a well made bull with a top set of Angus genetics out of APEX High Point blending with Windy 078, 4-Seas, Traveler 004, Bando 5175, Dateline and Traveler together. Some of the breeds leading Path Finder sires run several generations deep here.

Lot 141 403B

Black • Homo Polled • Purebred Angus Bull
 ASA# 2912955 • Tattoo: 403B • BD: 2/3/14
 Act. BW: 81 lbs. • Act. WW: 672 lbs. • Adj. WW: 659 lbs. • Ratio: 100
 Adj YW: 1324 lbs. • ADG: 4.08 lbs. • SC: 35.5

S A V FINAL ANSWER 0035
CONNELLY CAPITALIST 028
 PRIDES PITAOFCONANGA8821

VERMILION X FACTOR
BDV Z205 OF X FACTOR
 B D V T705 OF 112

Spring 2015 ASA EPDs

CE	BW	WW	YW	MCE	M	MW	CW	YG	MB	BF	REA	API	TI
12.2	-1.0	75.8	125.2	9.7	20.7	58.6	43.2	-0.03	0.73	0.006	0.56	132.2	78.8

This bull is a light birth bull that is out of an extra fancy two-year-old dam. He blends together a nice pedigree that brings some of the Angus breeds top performing Angus genetics with excellent dispositions. Capitalist, X Factor, 616, Bushwacker, Final Answer and Traveler all appear on his pedigree. They also represent top maternal strength.

Lot 142 407B

Black • Homo Polled • Purebred Angus Bull
 ASA# 2912962 • Tattoo: 407B • BD: 2/13/14
 Act. BW: 87 lbs. • Act. WW: 618 lbs. • Adj. WW: 619 lbs. • Ratio: 92
 Adj YW: 1171 lbs. • ADG: 3.46 lbs. • SC: 35.5

RITO 707 OF IDEAL 3407 7075
S A V RESOURCE 1441
 S A V BLACKCAP MAY 4136

HART TRAVELER H075 3337
BD V R521 OF HART TRAVELER
 BDV 616 OF EXCITEMENT

Spring 2015 ASA EPDs

CE	BW	WW	YW	MCE	M	MW	CW	YG	MB	BF	REA	API	TI
7.3	0.9	63.8	104.7	2.2	26.7	58.6	34.0	0.03	0.29	0.009	0.27	77.6	57.5

This Resource son comes from a Stout Hart Traveler daughter that has been a real good producer. He blends together a rock solid pedigree anchored by the great Resource bull that has the Schaff programs attention. This bull certainly brings some of the top Angus blood to the table.

Lot 143 413B

Black • Homo Polled • Purebred Angus Bull
 ASA# 2912970 • Tattoo: 413B • BD: 2/22/14
 Act. BW: 90 lbs. • Act. WW: 635 lbs. • Adj. WW: 640 lbs. • Ratio: 94
 Adj YW: 1305 lbs. • ADG: 4.19 lbs. • SC: 35.5

RITO 707 OF IDEAL 3407 7075
S A V RESOURCE 1441
 S A V BLACKCAP MAY 4136

DDA EMBLAZON 3C
DR ERISKAY 6130
 DR BLISS 328

Spring 2015 ASA EPDs

CE	BW	WW	YW	MCE	M	MW	CW	YG	MB	BF	REA	API	TI
10.0	0.6	58.4	98.7	2.1	25.3	54.5	30.2	0.01	0.33	0.018	0.34	86.1	56.4

This Resource son is a well built thick bodied, long made bull with excellent fleshing ability and easy keeping genetics. His dam is a cow that is bred for low maintenance efficiency she goes back to the Dale Davis herd. Udder quality is top notch here. This bulls dam got stifled in early summer, this affected his weaning performance. However don't over look him, he is bred to be top shelf.

Lot 144 412B

Black • Homo Polled • Purebred Angus Bull
 ASA# 2912969 • Tattoo: 412B • BD: 2/19/14
 Act. BW: 76 lbs. • Act. WW: 690 lbs. • Adj. WW: 688 lbs. • Ratio: 102
 Adj YW: 1181 lbs. • ADG: 3.07 lbs. • SC: 35.5

S A V FINAL ANSWER 0035
COLEMAN REGIS 904
 COLEMAN DONNA 714

S A V PIONEER 7301
BDV Z212 OF PIONEER
 B D V R521 OF HART TRAVELER

Spring 2015 ASA EPDs

CE	BW	WW	YW	MCE	M	MW	CW	YG	MB	BF	REA	API	TI
16.0	-2.3	66.9	107.4	9.4	25.9	59.3	30.5	-0.05	0.46	0.041	0.73	128.2	69.2

Heifer bull buyers take a look at this 76lb Regis calf going back to Pioneer. He is bred to be calving ease with good moderate sized Fleshing ability. There is some excellent cow power and low maintenance genetics here.

Lot 145 401B

Black • Homo Polled • Purebred Angus Bull
 ASA# 2912953 • Tattoo: 401B • BD: 1/29/14
 Act. BW: 72 lbs. • Act. WW: 660 lbs. • Adj. WW: 643 lbs. • Ratio: 98
 Adj YW: 1317 lbs. • ADG: 4.11 lbs. • SC: 35.5

S A V FINAL ANSWER 0035
CONNELLY CAPITALIST 028
 PRIDES PITAOFCONANGA8821

S A V PIONEER 7301
BDV Z203 OF PIONEER
 B D V R513 OF HART TRAVELER

Spring 2015 ASA EPDs

CE	BW	WW	YW	MCE	M	MW	CW	YG	MB	BF	REA	API	TI
15.5	-3.0	63.7	110.5	9.5	24.6	56.4	31.9	0.04	0.71	0.044	0.49	139.5	74.0

This bull blends together some of the best cows that ate grass on our ranch. He is a calving ease son of Capitalist out of a two-year-old Pioneer daughter. I feel he is top shelf all the way. His disposition is very quite and he is loaded with capacity and cows that stayed in condition and had perfect udders. Note that this bull had foot rot this summer so we removed a front toe. He has never favored his foot since he healed. I will fully guarantee him to stay sound and breed cows. I feel that this bull offers such a great genetic package that we kept him in the sale.

Lot 146 408B

Black • Homo Polled • Purebred Angus Bull
 ASA# 2912963 • Tattoo: 408B • BD: 2/14/14
 Act. BW: 80 lbs. • Act. WW: 698 lbs. • Adj. WW: 692 lbs. • Ratio: 104
 Adj YW: 1279 lbs. • ADG: 3.63 lbs. • SC: 37.5

S A V FINAL ANSWER 0035
COLEMAN REGIS 904
 COLEMAN DONNA 714

S A V PIONEER 7301
BDV Z201 OF PIONEER
 BDV W906 OF PREDESTINED

Spring 2015 ASA EPDs

CE	BW	WW	YW	MCE	M	MW	CW	YG	MB	BF	REA	API	TI
15.9	-1.6	73.9	121.3	10.3	26.4	63.3	39.9	0.01	0.68	0.053	0.76	140.8	77.9

I believe this bull should work on heifers. He is out of Regis the calving ease specialist and a two-year-old Pioneer daughter. There is top genetics blended in his lineage. Cow power is evident here.

Lot 147 415B

Black • Homo Polled • Purebred Angus Bull
 ASA# 2912973 • Tattoo: 415B • BD: 2/24/14
 Act. BW: 80 lbs. • Act. WW: 642 lbs. • Adj. WW: 643 lbs. • Ratio: 95
 Adj YW: 1228 lbs. • ADG: 3.66 lbs. • SC: 35

S A V FINAL ANSWER 0035
COLEMAN REGIS 904
 COLEMAN DONNA 714

VERMILION X FACTOR
BDV Z207 OF X FACTOR
 B D V S620 OF HART TRAVELER

Spring 2015 ASA EPDs

CE	BW	WW	YW	MCE	M	MW	CW	YG	MB	BF	REA	API	TI

This Regis son is out of a real nice X-Factor two-year-old heifer that goes back to one of our top cow families. Use him on bigger heifers or make a cow bull out of him. There is cow power and maternal strength in this bull. Udder quality will be the best. He will sire stoutness and payweight.

Lot 148 **409B**

Black • Homo Polled • Purebred Angus Bull
 ASA# 2912964 • Tattoo: 409B • BD: 2/14/14
 Act. BW: 81 lbs. • Act. WW: 599 lbs. • Adj. WW: 599 lbs. • Ratio: 89
 Adj YW: 1095 lbs. • ADG: 3.10 lbs. • SC: 37

APEX WINDY 078 TC TOTAL 410
APEX HIGH POINT 162 **BDV X004 OF TOTAL**
 APEXETTE ROSE 8021 **BDV T707 OF 4-SEASONS**

Spring 2015 ASA EPDs

CE	BW	WW	YW	MCE	M	MW	CW	YG	MB	BF	REA	API	TI
5.3	-1.0	68.8	112.1	2.4	32.2	66.6	35.4	0.03	0.59	0.021	0.40	94.1	70.6

This bull is out of one of the fanciest cows on the ranch and the High Point bull. There is excellent Angus genetics here with Windy 078, TC Total Traveler 004 lined up. He might be the best buy of the day. Don't overlook him.

Lot 149 **420B**

Black • Homo Polled • Purebred Angus Bull
 ASA# 2912985 • Tattoo: 420B • BD: 3/28/14
 Act. BW: 87 lbs. • Act. WW: 643 lbs. • Adj. WW: 662 lbs. • Ratio: 95
 Adj YW: 1141 lbs. • ADG: 3.11 lbs. • SC: 35

APEX WINDY 078 KMK ALLIANCE 6595 I87
APEX HIGH POINT 162 **BDV Y105 OF ALLIANCE I87**
 APEXETTE ROSE 8021 **BDV U802 OF TRAVELER 004**

Spring 2015 ASA EPDs

CE	BW	WW	YW	MCE	M	MW	CW	YG	MB	BF	REA	API	TI
6.1	0.0	65.0	105.1	2.4	31.2	63.7	32.8	0.13	0.43	0.027	0.10	84.0	62.6

Out of a real well made Alliance I87 daughter and High Point. This bull is bred to sire performance and good producing daughters. He should sire calves that weigh up at sale time. He is out of a very nice three-year-old dam.

Lot 150 **422B**

Black • Homo Polled • Purebred Angus Bull
 ASA# 2912987 • Tattoo: 422B • BD: 4/15/14
 Act. BW: 74 lbs. • Act. WW: 675 lbs. • Adj. WW: 708 lbs. • Ratio: 100
 Adj YW: 1147 lbs. • ADG: 3.15 lbs. • SC: 36.5

J U COAL BANK 84U B P F SPECIAL FOCUS 504
MRA COAL BANK 1243 **BDV Z215 OF SPECIAL FOCUS**
 MRA RUBY 9250 **BDV W905 OF FINAL ANSWER**

Spring 2015 ASA EPDs

CE	BW	WW	YW	MCE	M	MW	CW	YG	MB	BF	REA	API	TI
17.0	-2.3	70.2	115.8	9.1	27.7	62.8	35.7	0.07	0.70	0.045	0.46	143.5	77.1

This bull is one of the youngest Angus in the pen. He is a heifer bull out of a two-year-old heifer. He should sire excellent calving ease with good performance.



Lot 151 **419B**

Black • Homo Polled • Purebred Angus Bull
 Tattoo: 419B • BD: 3/26/14
 Act. BW: 56 lbs. • Act. WW: 574 lbs. • Adj. WW: 592 lbs. • Ratio: 90
 Adj YW: 1078 lbs. • ADG: 3.15 lbs. • SC: 34

TRINITY ESPRESSO 1407 S A V THUNDER BIRD 9061
TRINITY THUNDER 2271 **TRINITY ERICA 0381**
 TRINITY ERICA 0381 MITTY IN FOCUS

Spring 2015 ASA EPDs

CE	BW	WW	YW	MCE	M	MW	CW	YG	MB	BF	REA	API	TI
18.0	-3.0	62.0	101.2	9.0	26.6	60.2	22.5	0.06	0.67	.035	.06	141.0	67.0

This bull is a true calving ease bull, use him on heifers and sleep all night. John bought this dam from Trinity Farms. She is a two-year-old Thunderbird daughter and his sire is likewise a Thunderbird son with extreme calving ease.

Lot 152 **423B**

Black • Homo Polled • Purebred Angus Bull
 ASA# 2913236 • Tattoo: 423B • BD: 4/29/14
 Act. BW: 80 lbs. • Act. WW: 738 lbs. • Adj. WW: 738 lbs. • Ratio: 108
 Adj YW: 1258 lbs. • ADG: 3.25 lbs. • SC: 35

J U COAL BANK 84U SITZ UPWARD 307R
MRA COAL BANK 1243 **BDV Y104 OF UPWARD**
 MRA RUBY 9250 **BDV P414 OF EMULATION EXT**

Spring 2015 ASA EPDs

CE	BW	WW	YW	MCE	M	MW	CW	YG	MB	BF	REA	API	TI
12.2	-0.9	60.7	104.9	6.6	29.4	59.8	31.7	-0.01	0.57	0.021	0.46	114.5	66.6

This is the youngest Angus bull in the sale he posted excellent performance. His dam is a very nice UPWARD daughter and his sire is our high calving ease High ultra sounding Coal Bank bull. A nice complete bull. Don't over look him he is young.

THANK YOU!

I would like to say thanks to all our present, past, and new customers. We don't take your choice of doing business with us lightly. In today's fast paced world it is at times hard to make all the contacts we should. Always remember, if you ever have a problem with your purchase, call, we need to know. As always we will have a bite to eat and some refreshment after the sale. Please stay around a while if you can. It is a time that we can get to know each other better. Thanks so much for taking the time and choosing us to be your seedstock supplier. It means a lot.

Bill, Darlene, Bob, Virginia, John and Alicia, Harry and Elaine

REFERENCE SIRES

SIMMENTAL BULL REFERENCE SIRES

TRAX DOC

This is a power bull he offers excellent performance in his progeny. His dam has been a top producer that always produced in the top percentile. His sire is a pound maker that sires top-notch daughters with excellent udder quality. Use his sons to deliver pay weight and daughters you will want to keep.

TRAX SOLO

We purchased Solo as a true out cross to our herd and much of the Simmental breed. He has not disappointed us in his ability to sire calves that perform. We think his greatest asset is his ability to sire cattle with thick tops and rear quarters. He works best on Angus cows making exceptional SimAngus Cattle.

KS BLACK DIAMOND

Is the sire of Doc. We used him on a group of cows that could handle a little more power. We really think a couple of his sons are home runs. They are thick deep and heavy muscled. There is a little more birth weight in them so he is definitely a cow bull.

RCS STETSON

This is a true heifer bull and his EPD's and API numbers state that. We used him successfully on some heifers. I believe he is best used that way on cattle that need more calving ease. You will give up some performance at weaning.

BDV MASTER PIECE

Was the top selling bull in our production sale a few years ago, selling to Rock Creek Simmentals in Kansas. He is a true power bull. His calves are stout at weaning time and perform in the top percentile on test. His daughters are powerful full-bodied cows that milk well. His dam is one of our best. We recommend using him to add fleshing ability and performance; his calves weigh in the 90's at birth.

LRS FLEX

Flex is a big-bodied thick make half blood SimAngus bull. He was the top selling SimAngus in Clay's sale. His calves are top performance cattle that will pay the bills. Expect his sons to sire calves that weigh heavy in the fall eye appeal & style is evident in their make-up.

BDV FESTUS 149S

A super stout SimAngus that is very consistent his calves are thick and easy fleshing. 149S will keep mature cow size in line. His daughters are very easy keepers that have nice udders, use him to add thickness on those frailer type cattle.

TNT TUITION

This SimAngus bull certainly is a pleaser. Early on his calves will catch your eye. They just have that look. We have used him on heifers with some success. I recommend him more to use on cows but with supervision. Heifers can be bred to him. His calves are long bodied eye appealing performance cattle. His daughters raise big calves and stay in medium condition.

BDV NEW TRADITION 131X

This bull is a moderate sized purebred bull with extra body depth and thickness we retained him to use in our herd. His Dam is a no miss moderate size cow with a perfect udder. We used him on a wide group of cows and he seemed to work well on them all. He sires cattle that will work in even the toughest environments

GW PREMIUM BEEF 612Z

I brought this SimAngus bull into our program to use on our heifers. He has proven to be an excellent choice to use on them. He likewise sires a more refined look that pleases us well. He has more muscle & shape than most high API bulls. We recommend using his sons to add calving ease & carcass values. His daughters will make nice cows. His EPD and API values are ranked in the top one percent of the SimAngus cattle.

ANGUS BULL REFERENCE SIRES

CONELLY CAPITALIST

This bull is one of the finest, his calves are easily born. It doesn't take long to notice them they are thick and deep. Our Capitalist SimAngus calves are exceptional they were standouts all summer. He sires more thickness depth of body and rear-end than about any Angus bull we have used. His Angus sons possess calving ease with fleshing ability. His calves weigh heavy at weaning, but have the ability to shut down and stop getting taller however they still possess the power to put on pounds on test. His daughters look exceptional.

BDV TORQUE 912W

This Angus bull is one of the most predictable Angus sires we have ever owned or used. His calves are just exceptional small at birth weight and very easy to appreciate every day you own them. He does things right. His calves flesh easy, stay in shape and are loaded with muscle. They are moderate framed with lots of performance. I would take a pasture full of his kind. His daughters are the keeping kind moderate framed thick & broody, their udders are near perfect.

APEX HIGH POINT

We purchased High Point as the sale feature and high seller out of the APEX Program. He is a son of Windy 078. His calves are performance cattle; they are high octane cattle that press the scale down at weaning. They also perform well on test. His daughters should make good cows.

REGIS

This bull needs no introduction, He is a true heifer bull that offers a little extra shape. His dam comes from one of the Angus breeds most respected cow families. The Donna's are moderate framed cows with excellent fleshing ability and maternal qualities. Calving ease and neat made calves are his specialty.

FOOD FOR THOUGHT

What a year the last 12 months have proved to be. It seems that no matter what a cowman choose to do turned out positive. The biggest mistake we could have made was to contract our calves to early, but even then at the prices that were offered early there was more dollars than cattlemen were ever offered before.

Right now calves are a valuable commodity no matter how big or small, they are worth more than ever before. Some say that they are all worth the same. However, the heavy calves are still more valuable and will bring home more total dollars than flyweight calves.

For example a 400lb fly weight calf will bring approximately \$.100 per pound more than a 600lb calf. There were a lot of both sold this past year. Lets do the math

400	600
X 3.75	X 2.75
1,500	1,650

That's a difference of 150 dollars more earned per cow by proper management and better genetics. Often times the difference is only the genetics used. When you take that \$150 per head x 25 cows x four years use per bull, it comes to an extra \$15,000 per bull in his four year lifetime. In most cases a better bull won't cost you anything.

There are quite a few cattlemen that buy a heifer bull, use him for one to two years on their heifers and then use him on their cows after that. There are two things I would like for you to consider.

First most light birth weight calves 60-75lbs are certainly desirable for heifers but are usually lighter in the fall and many of them are those fly weight cut backs that don't fit the main calf loads. I don't see much wrong with that out of the heifers. However, when you go on and use these same small birth weight bulls on your cows you could be costing yourself \$150-\$200 per calf.

The other matter is when retaining replacement females, small birth weight calves usually turn into heifers that have a smaller pelvis and can only handle 75-80lb birth weight calves as mature cows.

I believe that by just adding 5lbs at birth weight to your heifer bulls will make a big difference in her ability to raise more dollars per calf weaned her whole life time. Heifers that can have a 80lb calf unassisted will wean a bigger calf her first year and will be the cow that raises a big stout calf as a mature cow.

I believe that a mature cow should be able to have a 85-95lb calf with no special attention. These calves will be top-notch feeder calves in the fall. The daughters will make better cows and become the best income-producing females you can own.

This year is one that makes raising cattle look easy. Every cattleman should have been

able to bank more dollars than ever before. It seems the later in the year we went the higher the cattle prices became. Where will it peak no one knows. The weak grain market is driving cattle prices higher a long with low cattle inventory.

Just a few years ago corn prices were over \$8/bushel, today it is around \$2.50/bushel. Not so long ago wheat prices roared all the way to \$20/bushel, not to many sold for that but a few did. It didn't stay long and today around \$4.50-5.0 seems to buy it.

The prediction is that cattle will stay positive for a few more years at least. My belief is that we will have a good run for a while, but we also have to realize that as grain prices and cattle inventories rise again (and they will) cattle prices will adjust accordingly. Now is the best time to own the best genetics you can afford. Get your cowherd shaped up, cull cows are worth a lot. Cull those poorer producers and replace them with heifers and cows that are able to raise calves that weigh and pay more.

The bulls you buy today will influence your cowherd for the next 20 years. Crossbreeding is not a new science it has been proven that a crossbred cow will make you more money and last longer than a straight bred. Crossbred calves have the ability to weigh more at weaning and are more feed efficient in the feedlots than straight bred cattle. To many times I see and hear some Breed Association and Breeders claim you don't need to crossbreed. This is not science it is greed. About every unbiased test or study out there shows that crossbred cattle are more profitable (there is a lot of research data that proves it).

We run Purebred Simmental, Purebred Angus, and Sim-Angus cows. There is no doubt that we have worked hard to design the best in each category, but the Sim-Angus cows are our best. They raise heavier calves, A higher percentage of them are bred early and have a higher percent of conception at preg check time. They also keep their condition better and are very eye appealing.

Our main breeding goal is to produce moderate framed easy keeping cattle that work for the cattleman. He is the one that owns them the longest, does the hard work and seems to make the least profit. We design our program so you can profit more on each and every cow you own. If a cow doesn't calve easy, have a calf with vigor and get up and go, it won't matter he already is a loser. Then they must have the genetic ability to convert grass to beef (payweight). This calf needs to look good and become a sale topper not a cut back. The heifer calves you retain have one purpose, to be profitable. It costs a lot of money to raise replacements. So they need to have the ability to stay in the herd. Cattle that don't get pregnant every year are costly. I believe they need extra fleshing ability and capacity to keep them thriving (Hard doing

peaked assed cattle just don't cut it). Then and only then do we add the so-called carcass traits that seem to make packers more money than anyone else. It seems that by over selecting for the highest EPD's and carcass numbers can be at the cattleman's expense. Don't get me wrong we have to raise cattle that work in all segments of the industry and create a good eating experience for the consumer. But we need to use a common sense approach. So many times the Universities, AI companies, and genetic scientists tell us numbers are the way to go. However, you need to remember that the number game is how they make their living. How many of them are out calving, feeding, and working the land. There is a difference when you are out there every day keeping cattle alive and thriving. We find that extremes are harder to manage, and by using common sense approach, cattle and the bottom line are easier to please.

We believe that EPD's are just like keeping replacement heifers. We usually cull a few off the top (the bigger more extreme kind) and then the rest come off the bottom. The ones you keep are the ones out of the middle. EPD's are no different.

We find that cattle that are somewhere in the top 20 to 50-percentile rank make better cows than the extreme highs. EPD's are not very accurate on young breeding cattle, I say use them accordingly. Don't let them overtake your eye or common sense. I have never seen or heard a calf buyer ask you how are his EPD's. They buy on the calves own ability to look good, weigh heavy, and convert feed to beef. Yes they do have to work all the way through the chain but don't sacrifice your own ability to stay profitable with easy keeping cattle that stay in the herd.

Our cows work for us, not us for them. We run them out to forage on their own and make their own living without extra feed until Mother Nature covers it up or we run out of grass. This year it looks to be early January before we bring them home. They are still in excellent condition and have not been fed hay yet. Our cows are efficient easy keeping cows that wean heavy calves. The mature size in these cows is from 1250 to 1400lbs, not to many bigger or smaller, udder quality is a must. We do not tolerate helping calves get started and you shouldn't have to either. We expect our cows and heifers to calve unassisted and if we do help one it better not be her fault. Our program is to breed & raise moderate framed cattle that take care of themselves, have excellent temperaments, raise heavy calves, breed back on time, and convert grass to beef with fewer inputs. Their calves must go on to be feed efficient convertors and do well in the beef chain, all the way to an enjoyable eating experience for the consumer.

QUICK GUIDE TO ASA EPDS AND \$ INDEXES

Expected Progeny Differences (EPDs): EPDs are the most accurate and effective tool available for comparing genetic levels. In using EPDs, the difference between two sires' EPDs represents the unit difference expected in the performance of their progeny. For example, if sires A and B have EPDs of +10 and -5, a 15-unit difference would be expected in their progeny (moving from -5 to +10 yields 15 units). Key to using EPDs is knowing what units they are expressed in. For example, if the above case referred to weaning weight EPDs, A would be expected to sire 15-pounds more *weaning weight* than B. If calving ease were the trait, A would be expected to sire 15-percent more *unassisted births* in first-calf heifers; in other words, if B sired 30 assists in a group of 100 heifers, we'd expect A to require 15 assists. A percentile-ranking chart is required to determine where a bull's EPDs rank him relative to other bulls in the breed. For percentile rankings or more detailed information about EPDs and \$ indexes visit www.simmental.org.

Listed below are the units ASA EPDs are expressed in:

All-Purpose Index (API): Dollars per cow exposed under an all-purpose-sire scenario. (See below for more details.)

Back Fat (BF): Inches of backfat.

Birth Weight (BW): Pounds of birth weight.

Calving Ease (CE): Percent of unassisted births when used on heifers.

Carcass Weight (CW): Pounds of carcass weight.

Maternal Calving Ease (MCE): Percent of unassisted births in first-calving daughters.

Milk (MLK): Pounds of weaning weight due to milk.

Marbling (MRB): Marbling score.

Maternal Weaning Weight (MWW): Pounds of weaning weight due to milk and growth.

Ribeye Area (REA): Square inches of ribeye.

Warner-Bratzler Shear Force (WBSF): Pounds of force required to shear a steak.

Stayability (STAY): Percent of daughters remaining in the cowherd at 6 years of age.

Terminal Index (TI): Dollars per cow exposed under a terminal-sire scenario. (See below for more details.)

Weaning Weight (WW): Pounds of weaning weight.

Yearling Weight (YW): Pounds of yearling weight.

Yield Grade (YG): Yield grade score.

\$ Indexes: Though EPDs allow for the comparison of genetic levels for many economically important traits, they only provide a piece of the economic puzzle. That's where \$ indexes come in. Through well-conceived, rigorous mathematical computation, \$ indexes blend EPDs and economics to estimate an animal's overall impact on your bottom line. The same technology that led to the dramatic progress in swine, poultry and dairy genetics over the last several decades was used to develop the following \$ indexes:

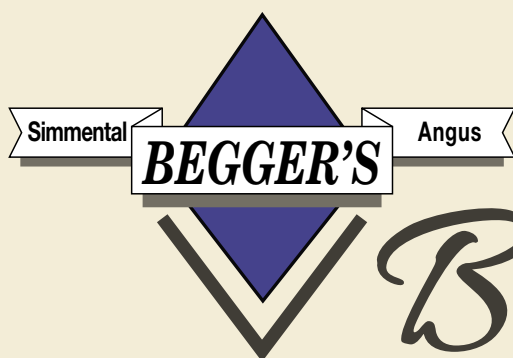
All-Purpose Index (API): Evaluates sires for use on the entire cow herd (bred to both Angus first-calf heifers and mature cows) with the portion of their daughters required to maintain herd size retained and the remaining heifers and steers put on feed and sold grade and yield.

Terminal Index (TI): Evaluates sire for use on mature Angus cows with all offspring put on feed and sold grade and yield.

Using API and TI: First, determine which index to use; if you're keeping replacements use API, if not, TI. Then, just as with EPDs, zero in on the unit difference between bulls. (As described above, index units are in dollars per cow exposed.) The difference can be used to determine how much a bull is worth compared to another. Or, put another way, how much you can pay for one bull compared to another. For example, when buying an all-purpose-type sire, you can quickly figure a bull scoring +100 for API is worth an extra \$6,000 over a +50 bull if both are exposed to 30 cows over 4 years (\$50 diff. x 30 hd. x 4 yr. = \$6,000). A percentile-ranking chart is required to determine where a bull's index value ranks him relative to other bulls in the breed. For percentile rankings or more detailed information about EPDs and \$ indexes.

Begger's Diamond V Ranch
482 Custer Trail Road
Wibaux, MT 59353

RETURN SERVICE REQUESTED // TIME DATED MATERIAL



Begger's DIAMOND V RANCH

Wednesday, February 4, 2015 // 12:30 PM
At the Ranch // Wibaux, MT



*Please bring this catalog
with you to the sale!*